



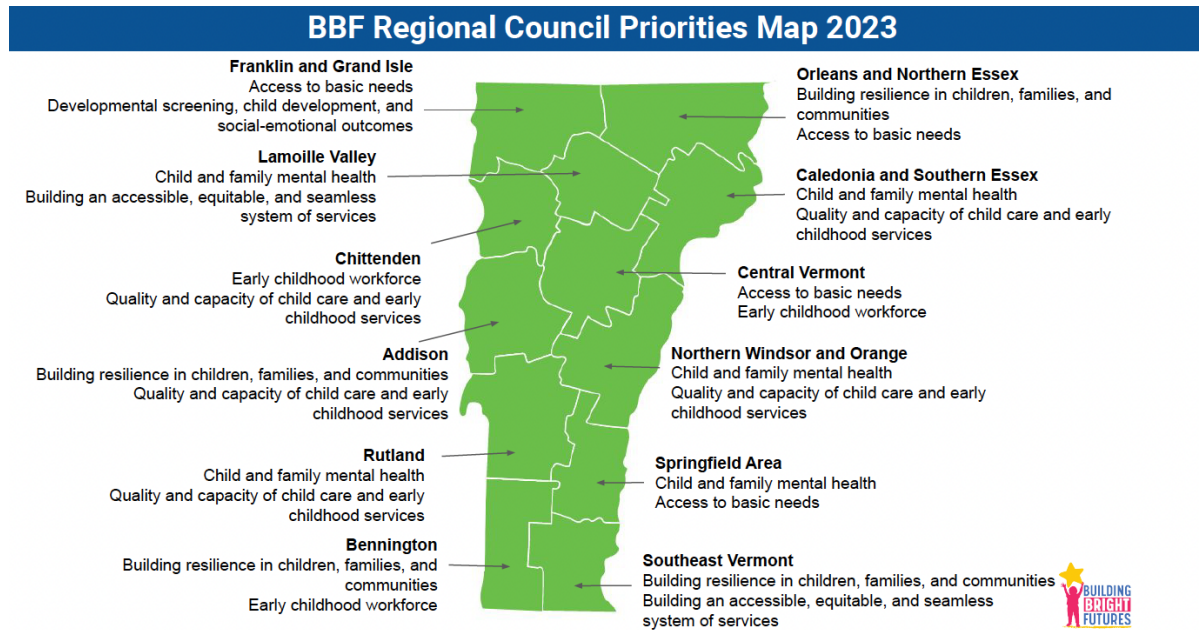
Rutland Regional Action Plan 2023-2024

Building Bright Futures’ Regional Councils bring together early childhood stakeholders to identify gaps, share expertise and resources, elevate regional and family voices, and implement strategies in each respective region. These strategies include identifying gaps for children and families and aiming to improve access to services and supports across early care, health, and education for young children and families in their communities. Regional Council members are crucial to each stage of this process, both in official convenings of the Regional Councils and within the early childhood system more broadly.

The 12 Regional Councils are mandated to support an integrated system of early care, health, and education at the local level under Vermont Statute Title 33 § Chapter 46. In alignment with, and with support from, the State Advisory Council, Regional Councils are tasked with coordinating and implementing services in accordance with system and regional priorities. Regular Regional Council meetings are just one way that this mandate is fulfilled.

Early childhood stakeholders from across Vermont bring their perspectives together through Regional Councils 8-10 times a year. Participants at regional tables include professionals in physical and mental health, social services, basic needs, early childhood care and education, and pre-K-12 education; families of children under 9; and community members invested in the well-being of young children.

Annually, each Regional Council sets two regional priorities to guide their work. The map at right illustrates the top two priorities of each region, showcasing the similarities and differences among the 12 regions in Vermont.





Rutland Regional Council 2023-2024 Plan

Below you will find a plan outlining work to make progress for each priority as well as additional strategies and actions of the Rutland Regional Council.

Activity/Function	Council Time	VECF/ Council Funds	Strategic Partner- ships	BBF Staff Time	BBF Network	Notes/Status
Regional-State Coordination via BBF Network						
Convene regular Regional Council meetings	x		x			Leadership team to help create engaging agendas and help lead meetings
Identify needs/gaps within the region—Quality, capacity, leadership, professional development needs, mental health supports	X	x	X	X	x	Use emerging issues doc to identify regional needs, then agenda topics/guests to dive more deeply into these points
Connect with others about successes, and announcements	x		x		x	Council members share their experiences and give and/or receive support or celebration
Foster connection among regional partners as part of a statewide network	X		X	X	X	Regional Manager to call out ties between regional work and statewide work
Develop strategies and next steps that support the regional needs of our communities						Leadership team and Regional Manager to identify next steps/who to bring to council for more information
Priority Issue: Quality and capacity of child care and early childhood services - Respond to system gaps to improve access for families to high-quality opportunities that meet their needs (child care, including pre-K, special education, mental health services, etc.)						
Connect Stafford Human Services Grads—Community College of Vermont (CCV) Courses	x		x	x		Is this happening? Ensure students are aware of scholarship and internship opportunities. Ensure they have access to early childhood education career ladder. Can the council support a CCV certificate? Regional Manager to connect with Darcy Oakes of CCV
Connect with those enrolled in babysitter classes—CCV-Castleton, regarding working in Rutland in Early Care & Learning	x		x	x		Topic for council discussion: What form would this take? Who is the point of contact? Encourage the use of Handshake as a tool to connect with students and



Rutland Regional Council 2023-2024 Plan

Activity/Function	Council Time	VECF/ Council Funds	Strategic Partner- ships	BBF Staff Time	BBF Network	Notes/Status
						others when recruiting
Support early childhood education quality by promoting the new SPARQS program at Vermont Association for the Education of Young Children (VTAEYC)	x		x	x	x	Support regional early childhood education community in this transition by promoting resources. Invite VTAEYC to present a Q&A at a council meeting
Gather information through 1:1 meetings and council discussions to identify emerging gaps and needs	X			X	X	Gather information through interviews, data collection, panel at Council, adding to BBF emerging priorities. Populations underserved—gaps; Data—who is served well? Who is not?
Sponsor a playgroup to support families whose children have been identified for EI and are awaiting services.		X	X			Playgroup format to serve multiple families at once. Help families understand what resources might be available to them. Wonderfeet as community partner
Priority Issue: Child and family mental health - Support early childhood and family mental health at home, at school/child care, and in the community. Promote strategies that build a child’s social-emotional development; support a caregiver’s emotional regulation; respond to the mental health workforce crisis; improve access to consultation and crisis services; and prevent the use of exclusionary discipline.						
Highlight the issues/challenges that loss of services and the residual impacts	x	x	x	x	x	Coordinate a panel discussion with CIS providers—what are the immediate needs and how can the council best support this work? Regional Manager to connect with Kelley Todriff—CIS Coordinator to expand on this point. What other services are impacted? Can a regional grant help to support Rutland Mental Health & CIS to fill capacity and staffing? Input from Lauren Norford, Patty Searles, Kelley Todriff, and Rutland Parent Child Center
Promote child development events at Wonderfeet—“Onerful Year” Just Play? No Way!	x			x	x	Connect Families in a cohort to find out about services, referrals, peer networking, child development
Sponsor/promote the new Substance Use Disorder/trauma-informed care training for all early care and	x	x	x	x	x	Work with Rutland Mental Health and Addison Parent Child Center to create a training for those that support



Rutland Regional Council 2023-2024 Plan

Activity/Function	Council Time	VECF/ Council Funds	Strategic Partner- ships	BBF Staff Time	BBF Network	Notes/Status
learning partners						kids and families experiencing the effects of substance use disorders. Focusing on removing stigma and leading with compassion.
Convene a Professional Development team to identify needs and promote opportunities	x		x	x	x	Revive the Professional Development team to identify needs and areas of special interest. Create a year-long plan.
Publish the Day in the Life Video designed to recruit to the ECE field and educate our community on what ECE teachers do			x	x		Complete video and create a distribution plan. Regional Manager to work with Video team on this—Shawn, Nanci, & Stephanie
Connect with Castleton University—is there any possibility the Early Childhood Learning HUB at Castleton might be reinvigorated?			x	x		Regional Manager to follow up with Ric Reardon
Conduct assessment to identify emerging gaps and needs	X			X	X	Gather information through one on one meetings, data collection, discussion at Council meetings, adding to BBF emerging priorities. Populations underserved—gaps; Data—who is served well? Who is not?
Identify who is not at our table. What voices and experiences are missing to complete the work? Who are the partners needed to complete the work stated above?	X		X	X		Council identifies who could be brought in to support work. Spreadsheet, Regional Manager to engage and invite prospective community partners, schedule meetings to build relationships, etc. Key partners currently not at the table: Pre-K coordinator Sarah Cosgrove, Strong Families, Easterseals, Department for Children and Families (DCF), New Americans, library, police force, Scott Graves—The Hub, Rutland Rec, Mindful Monkey, Parents, Brian Kerns, Rutland Regional Medical Center, Free Clinic, Planned Parenthood



Rutland Regional Council 2023-2024 Plan

Definitions

Council Time - Partners dedicating time to attend the council meeting, how the council time is used to build relationships, information sharing, and collaboration sharing accomplished together

Resources - Funds allocated to support council priorities by BBF, or awarded through other sources like the Vermont Early Childhood Fund or outside grants/sponsorships

Strategic Partnerships - Establishing or developing connections between the Council (Regional Manager or Council members) and other regional partners. This can be 1:1, attending other coalition meetings, or convening small working groups.

BBF staff time - Time dedicated by the Regional Manager or other BBF staff to support a council effort (communication, data, planning, etc.)

BBF Network - Elevating a regional gap or need through the BBF Network to inform decision-making. This could be submitting an issue to the 'emerging priorities' document, bringing an issue to a VECAP committee for further discussion, identifying data gaps, or informing BBF SAC policy recommendations.