



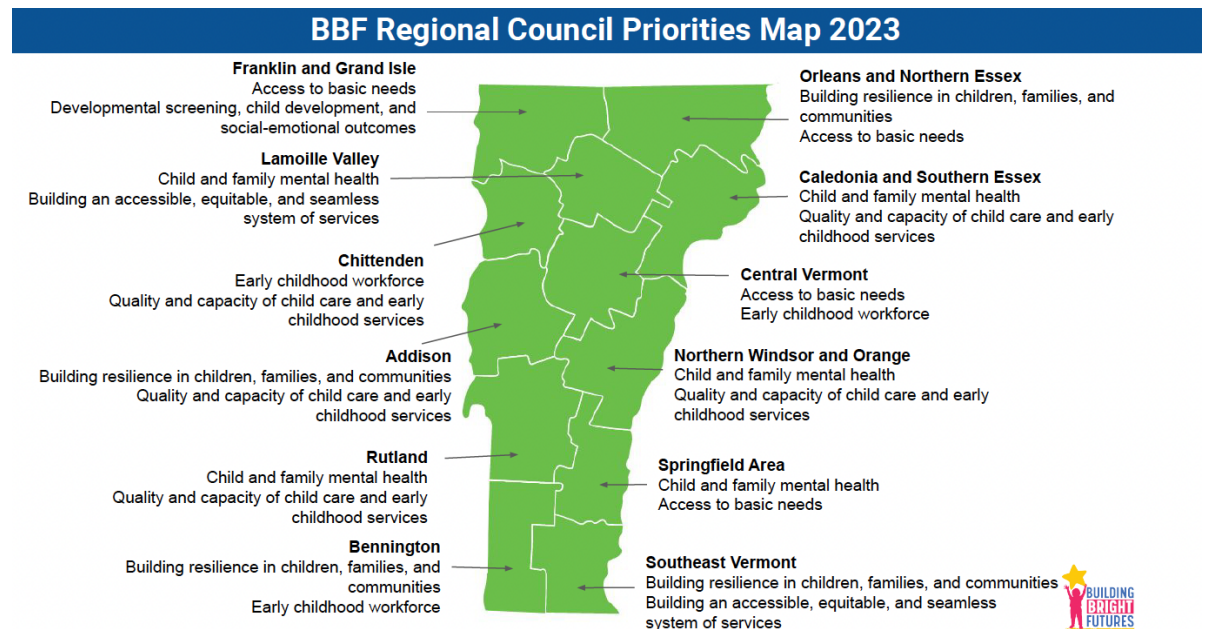
## Northern Windsor and Orange Regional Action Plan 2023-2024

Building Bright Futures’ Regional Councils bring together early childhood stakeholders to identify gaps, share expertise and resources, elevate regional and family voices, and implement strategies in each respective region. These strategies include identifying gaps for children and families and aiming to improve access to services and supports across early care, health, and education for young children and families in their communities. Regional Council members are crucial to each stage of this process, both in official convenings of the Regional Councils and within the early childhood system more broadly.

The 12 Regional Councils are mandated to support an integrated system of early care, health, and education at the local level under Vermont Statute Title 33 § Chapter 46. In alignment with, and with support from, the State Advisory Council, Regional Councils are tasked with coordinating and implementing services in accordance with system and regional priorities. Regular Regional Council meetings are just one way that this mandate is fulfilled.

Early childhood stakeholders from across Vermont bring their perspectives together through Regional Councils 8-10 times a year. Participants at regional tables include professionals in physical and mental health, social services, basic needs, early childhood care and education, and pre-K-12 education; families of children under 9; and community members invested in the well-being of young children.

Annually, each Regional Council sets two regional priorities to guide their work. The map at right illustrates the top two priorities of each region, showcasing the similarities and differences among the 12 regions in Vermont.





Northern Windsor and Orange Regional Council 2023-2024 Plan

Below you will find a plan outlining work to make progress for each priority as well as additional strategies and actions of the Northern Windsor and Orange Regional Council.

Activity/Function	Council Time	VECF/ Council Funds	Strategic Partner- ships	BBF Staff Time	BBF Network	Notes/Status
Regional-State Coordination via BBF Network						
Share information across early childhood partners	X		X	X		
Identify opportunities for partnership and resource alignment	X		X	X		
Acknowledge and address regional concerns through emerging issues doc, committees, SAC, etc.	X	X		X	X	
Increase alignment between regional and statewide work	X		X	X	X	
Convene regular Regional Council meetings	X			X		
<b>Priority Issue: Child &amp; Family Mental Health</b> - Support early childhood and family mental health at home, at school/child care, and in the community. Promote strategies that build a child’s social-emotional development; support a caregiver’s emotional regulation; respond to the mental health workforce crisis; improve access to consultation and crisis services; and prevent the use of exclusionary discipline.						
Identify key partners to engage around child, family, and adult mental health	X		X	X		The leadership team and the Regional Manager will identify contacts and the Regional Manager will conduct outreach and invite to the council: Health Care and Rehabilitation Services, Dartmouth Health, Mt. Ascutney Hospital and Health Center Family Wellness Program, Gifford Medical Center, The Family Place (Early Intervention/CIS), Vital Communities early childhood education team, etc.



Northern Windsor and Orange Regional Council 2023-2024 Plan

Data evaluation in relation to child and family mental health	X		X	X		The Regional Manager and council will assess available data (and gaps)—staff trained in supporting social emotional development and availability
Series of council meetings with mental health professionals—child, family, workforce and when to combine with Springfield Area council	X		X	X		The leadership teams will choose sequence and schedule for meetings (panel discussion, areas for opportunity, etc.)
Identify projects where council has capacity to participate	X	X	X	X		Public Health Council, Early Childhood Service Delivery Integration (ECSDI), Strengthening Families (Playgroups/Circle of Security)
Promote area programs that focus on social connectedness	X			X		Strengthening Families Network (CHIP workgroup) - Circle of Security/Playgroups; Orange County Parent Child Center playgroups
Strategize on ways to increase inclusiveness in playgroups	X	X	X	X		Gas cards/admission for access, service representation (such as WIC), etc.
Mapping of resources: how is the region structured/divided? (for example, Windsor, Orange, Upper Valley, etc.)	X		X	X		Pull partners from throughout the region to assess connection or lack thereof. Identify areas of opportunity
Initiate/share resources on trainings for early childhood staff	X	X	X	X		The Regional Manager and the council will conduct an assessment of available trainings on mental health, including trauma, Strengthening Families, Positive Life Experiences, observation/evaluation, etc.
<b>Priority Issue: Quality and capacity of childcare and early childhood services - Respond to system gaps to improve access for families to high-quality opportunities that meet their needs (child care, including PreK, special education, mental health services, etc.)</b>						
Expand Early Care and Education Association (ECEA) workforce program into Vermont	X	X		X		Collaborate with ECEA around opportunities for bringing the early childhood workforce program into Vermont
Data for baseline and goal setting	X		X	X		Compile data on capacity, quality, and what we can understand of demand



Northern Windsor and Orange Regional Council 2023-2024 Plan

Continue and expand partnerships with early childhood services, agencies, organizations, etc.	X	X	X	X		Offer additional presentations on the Family Network Analysis, including child care providers. Create relationships with Gifford Medical Center and expand geographical partnerships
Expand partnership with GUVIST (Greater Upper Valley Integrated Services Team)	X		X	X		Focus on social connectedness and sustainability/quality of early child care

**Definitions**

**Council Time** - Partners dedicating time to attend the council meeting, how the council time is used to build relationships, information sharing, and collaboration sharing accomplished together

**Resources** - Funds allocated to support council priorities by BBF, or awarded through other sources like the Vermont Early Childhood Fund or outside grants/sponsorships

**Strategic Partnerships** - Establishing or developing connections between the Council (Regional Manager or Council members) and other regional partners. This can be 1:1, attending other coalition meetings, or convening small working groups.

**BBF Staff Time** - Time dedicated by the Regional Manager or other BBF staff to support a council effort (communication, data, planning, etc.)

**BBF Network** - Elevating a regional gap or need through the BBF Network to inform decision-making. This could be submitting an issue to the 'emerging priorities' document, bringing an issue to a VECAP committee for further discussion, identifying data gaps, or informing BBF SAC policy recommendations.