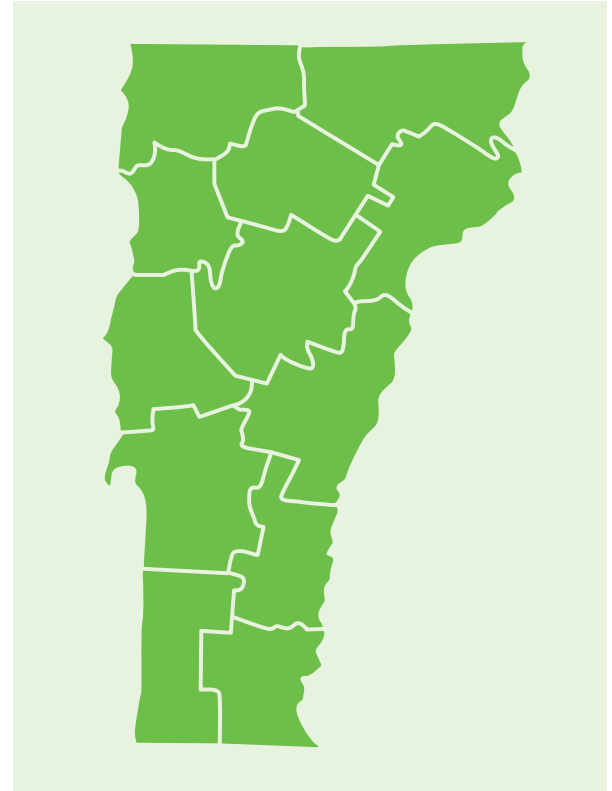


Introduction to Regional Profiles

The following regional profiles offer a snapshot of selected indicators of child and family well-being for each of Vermont's 12 regions, which line up with the Agency of Human Services Districts. Each indicator represents the most high-quality, up-to-date data that is available at the regional level and includes the same data from five years prior for comparison.

Each profile includes a highlight of a Regional Council success as well as five key data points: 1. The estimated population of children under 10, 2. The percentage of children under 12 living in households with incomes below 185% of the Federal Poverty Level (the benchmark for many benefit programs), 3. The number of children under 9 living in out-of-home custody, 4. The percentage of children ready for kindergarten, and 5. The percentage of third grade children reading at or above "proficient."



Current Status of All Vermont Children

CHILD POPULATION¹ (2021)

60,364 children under 10

Decreased from 62,535 in 2016

CHILDREN LIVING IN POVERTY^{2*} (2020)

30.4% children under 12 (22,125)

Decreased from 35.1% in 2015 (26,732)

CHILDREN IN OUT OF HOME CUSTODY³ (2022)

541 children under 9

Decreased from 618 in 2017

**Under 185% of the Federal Poverty Level*

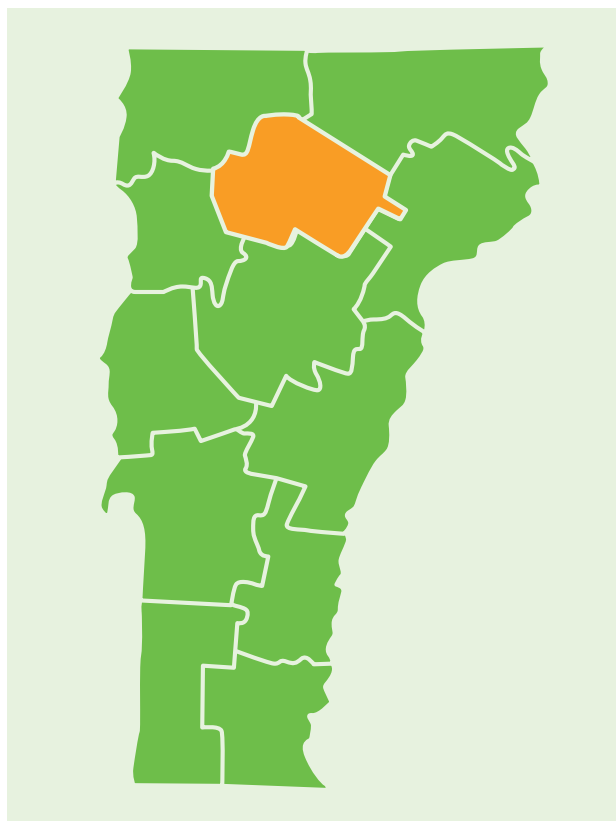
Educational Assessments

VERMONT STUDENTS

VERMONT STUDENTS	KINDERGARTEN READINESS ⁴ (FALL 2021)	3RD GRD READING PROFICIENCY ⁵ (SPRING 2021)
All Students	85%	42.5%
Male	82%	39.3%
Female	89%	45.9%
Free and Reduced Lunch Eligible	74%	25.4%
Not Free and Reduced Lunch Eligible	91%	54.2%
Attended Publicly Funded PreK	87%	NA
Did Not Attend Publicly Funded PreK	80%	NA
Historically Marginalized	NA	27.4%
Not Historically Marginalized	NA	59.1%

Lamoille Valley

The Lamoille Regional Council selected early childhood workforce development as one of two annual priorities and convened a group of community partners to work on the issue, including staff from the Green Mountain Technical and Career Center, HireAbility Vermont, Northeast Kingdom Learning Services (NEKLS), Northern Lights at CCV, and Apple Tree Learning Center. The group received funding from the Vermont Early Childhood Fund to host “Step UP to Childcare,” a project to promote career development and interest in working in the early childhood field. The goals of the project were to address barriers to enrollment, full participation, and completion, such as cost, length of program, access to reliable transportation, and the limited availability of financial assistance. Although the project as designed did not come to fruition, lessons were learned, documented, and shared and new partnerships were forged in the region, all of which will lead to more successful workforce development opportunities in the future.



Current Status

CHILD POPULATION¹ (2021)

3,233 children under 10

Increased from 3,443 in 2016

CHILDREN LIVING IN POVERTY^{2*} (2020)

31.8% children under 12 (1,255)

Decreased from 38.8% in 2015 (1,644)

CHILDREN IN OUT OF HOME CUSTODY³ (2022)

33 children under 9

Increased from 14 in 2017

**Under 185% of the Federal Poverty Level*

Educational Assessments

SUPERVISORY UNION / SCHOOL DISTRICT

Lamoille North SU
 Lamoille South SU
 Orleans Southwest SU

KINDERGARTEN READINESS⁴ (FALL 2021)

83%
81%
96%

3RD GRD READING PROFICIENCY⁵ (SPRING 2021)

36.4%
55.1%
28.5%

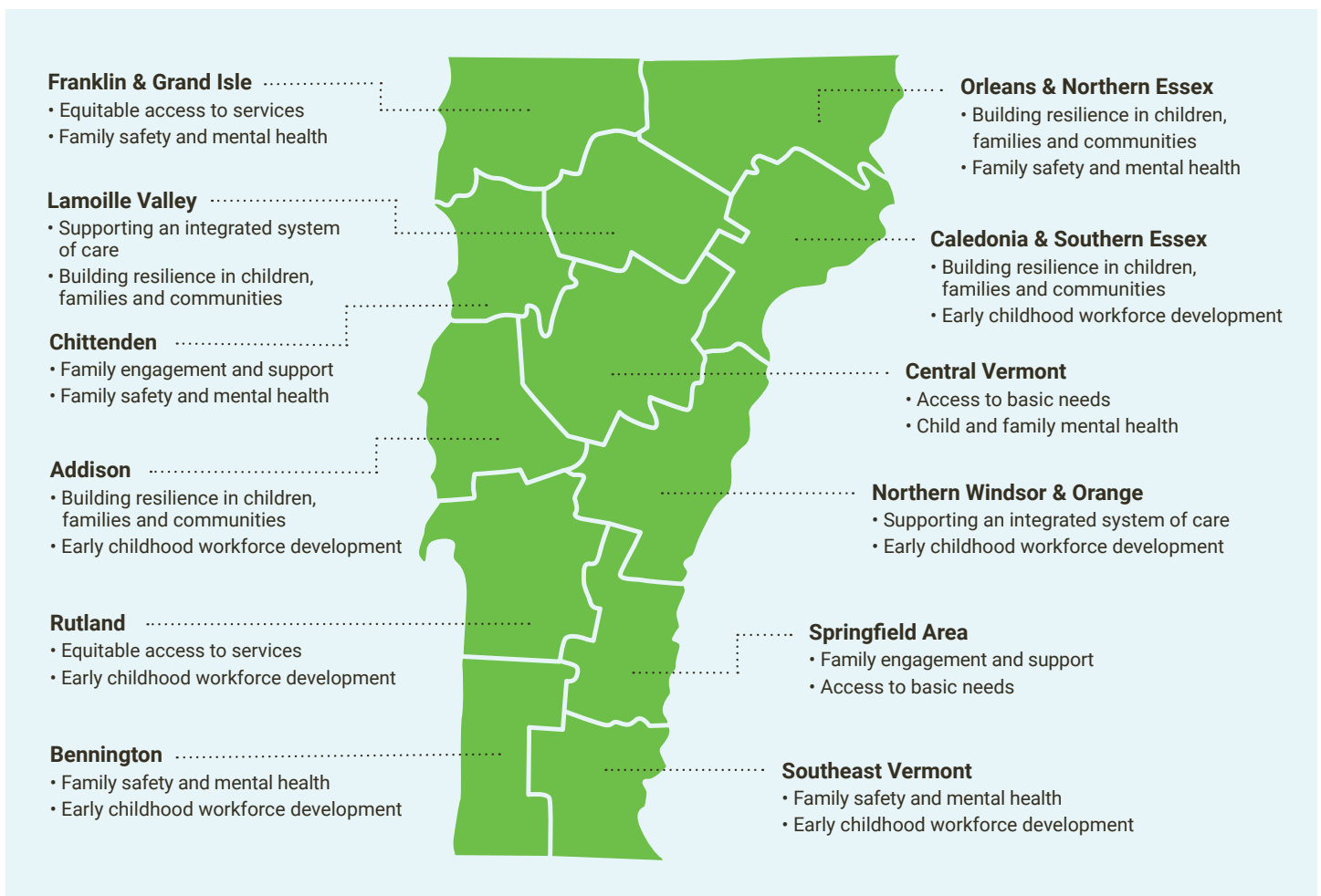
ABOUT REGIONAL COUNCILS

Building Bright Futures' Regional Councils bring together early childhood stakeholders to identify gaps, share expertise and resources, elevate regional and family voices, and implement strategies in each respective region. These strategies include identifying gaps for children and families and aiming to improve access to services and supports across early care, health, and education for young children and families in their communities. Regional Council members are crucial to each stage of this process, both in official convenings of the Regional Councils and within the early childhood system more broadly.

The 12 Regional Councils are mandated to support an integrated system of early care, health, and education at the local level under Vermont Statute Title 33 § Chapter 46. In alignment with, and with support from, the State Advisory Council, Regional Councils are tasked with coordinating and implementing services in accordance with system and regional priorities. Regular Regional Council meetings are just one way that this mandate is fulfilled.

Early childhood stakeholders from across Vermont bring their perspectives together through Regional Councils 8-10 times a year. Participants at regional tables include professionals in physical and mental health, social services, basic needs, early childhood care and education, and preK-12 education; families of children under 9; and community members invested in the well-being of young children.

Annually, each Regional Council sets two regional priorities to guide their work. The map below illustrates the top two priorities of each region, showcasing the similarities and differences among the 12 regions in Vermont.



More information about each region, including Regional Council meetings, can be found at buildingbrightfutures.org/what-we-do/regional-councils/