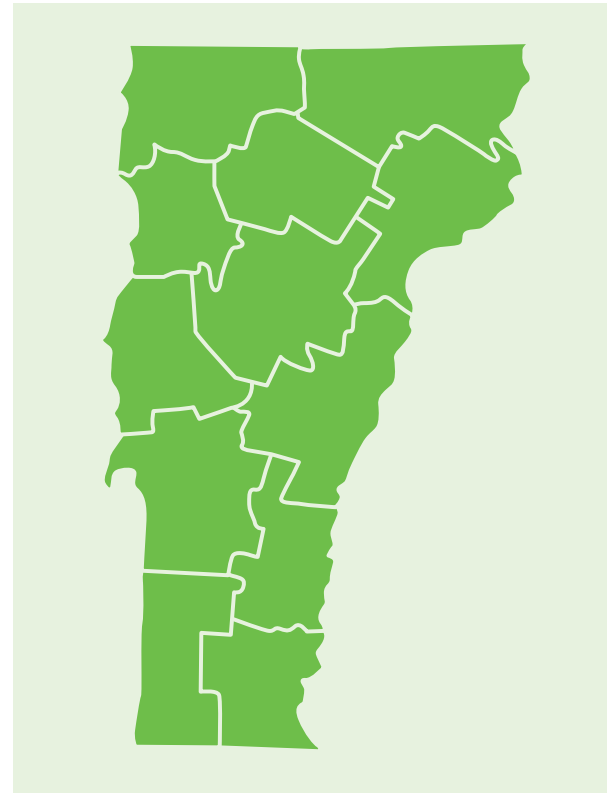


# Introduction to Regional Profiles

The following regional profiles offer a snapshot of selected indicators of child and family well-being for each of Vermont's 12 regions, which line up with the Agency of Human Services Districts. Each indicator represents the most high-quality, up-to-date data that is available at the regional level and includes the same data from five years prior for comparison.

Each profile includes a highlight of a Regional Council success as well as five key data points: 1. The estimated population of children under 10, 2. The percentage of children under 12 living in households with incomes below 185% of the Federal Poverty Level (the benchmark for many benefit programs), 3. The number of children under 9 living in out-of-home custody, 4. The percentage of children ready for kindergarten, and 5. The percentage of third grade children reading at or above "proficient."



## Current Status of All Vermont Children

### CHILD POPULATION<sup>1</sup> (2021)

**60,364** children under 10

Decreased from 62,535 in 2016

### CHILDREN LIVING IN POVERTY<sup>2\*</sup> (2020)

**30.4%** children under 12 (22,125)

Decreased from 35.1% in 2015 (26,732)

### CHILDREN IN OUT OF HOME CUSTODY<sup>3</sup> (2022)

**541** children under 9

Decreased from 618 in 2017

*\*Under 185% of the Federal Poverty Level*

## Educational Assessments

### VERMONT STUDENTS

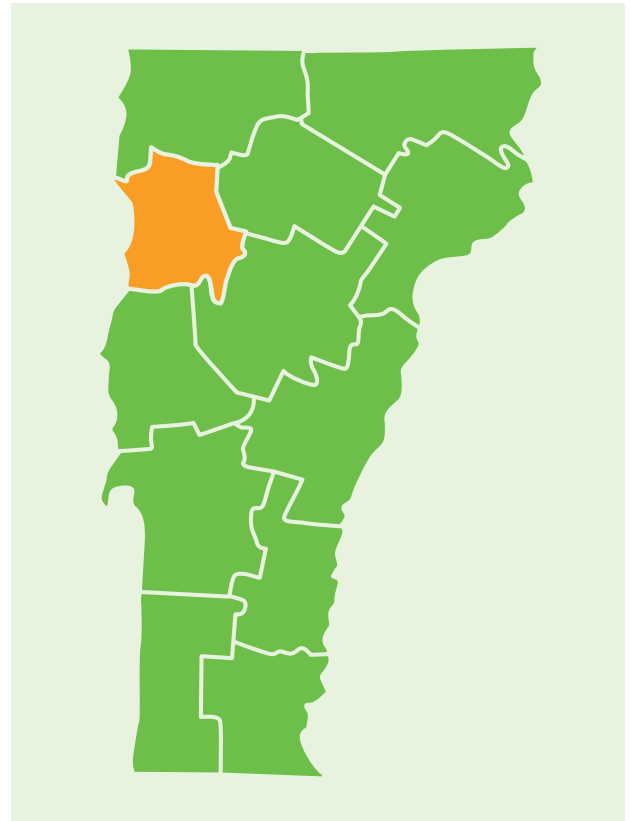
### KINDERGARTEN READINESS<sup>4</sup> (FALL 2021)

### 3RD GRD READING PROFICIENCY<sup>5</sup> (SPRING 2021)

All Students	86%	42.5%
Male	82%	39.3%
Female	90%	45.9%
Free and Reduced Lunch Eligible	74%	25.4%
Not Free and Reduced Lunch Eligible	91%	54.2%
Attended Publicly Funded PreK	88%	NA
Did Not Attend Publicly Funded PreK	80%	NA
Historically Marginalized	NA	27.4%
Not Historically Marginalized	NA	59.1%

# Chittenden

Substance use disorder seriously affects children and families in the state of Vermont. A four-year Collective Impact grant from the University of Vermont Medical Center (concluded in 2022) allowed the Chittenden Regional Council to better support Vermont families dealing with substance use disorder. Over the course of this project, BBF and its partners identified gaps and unmet needs of families in treatment and recovery and increased coordination of services to support families dealing with substance use disorder. On June 7, 2022, BBF concluded the project by hosting an event called "Seeds of Hope" in collaboration with the Vermont Department of Health and the City of Burlington's Racial Equity, Inclusion & Belonging Committee. A panel of five Vermont parents shared their personal experiences with substance use disorder. One panelist said, "My children are a huge part of my recovery. They always have been." She shared that when her daughter was born she "needed to be able to give her the best life that she could possibly have," and that meant getting into recovery.



## Current Status

### CHILD POPULATION<sup>1</sup> (2021)

**15,345** children under 10

Decreased from 15,840 in 2016

### CHILDREN LIVING IN POVERTY<sup>2\*</sup> (2020)

**24.6%** children under 12 (4,550)

Decreased from 26.1% in 2015 (4,995)

### CHILDREN IN OUT OF HOME CUSTODY<sup>3</sup> (2022)

**67** children under 9

Decreased from 85 in 2017

*\*Under 185% of the Federal Poverty Level*

## Educational Assessments

### SUPERVISORY UNION / SCHOOL DISTRICT

Burlington SD .....  
 Champlain Valley SD / Chittenden South SU .....  
 Colchester SD .....  
 Essex Westford SD .....  
 Milton SD .....  
 Mount Mansfield Unified Union SD / Chittenden East SU .....  
 South Burlington SD .....  
 Winooski SD .....

### KINDERGARTEN READINESS<sup>4</sup> (FALL 2021)

**78%** .....  
**95%** .....  
**84%** .....  
**91%** .....  
**81%** .....  
**94%** .....  
**93%** .....  
**83%** .....

### 3RD GRD READING PROFICIENCY<sup>5</sup> (SPRING 2021)

**42.5%** .....  
**71%** .....  
**59.2%** .....  
**52.7%** .....  
**27.0%** .....  
**57%** .....  
**53.0%** .....  
**24.0%** .....

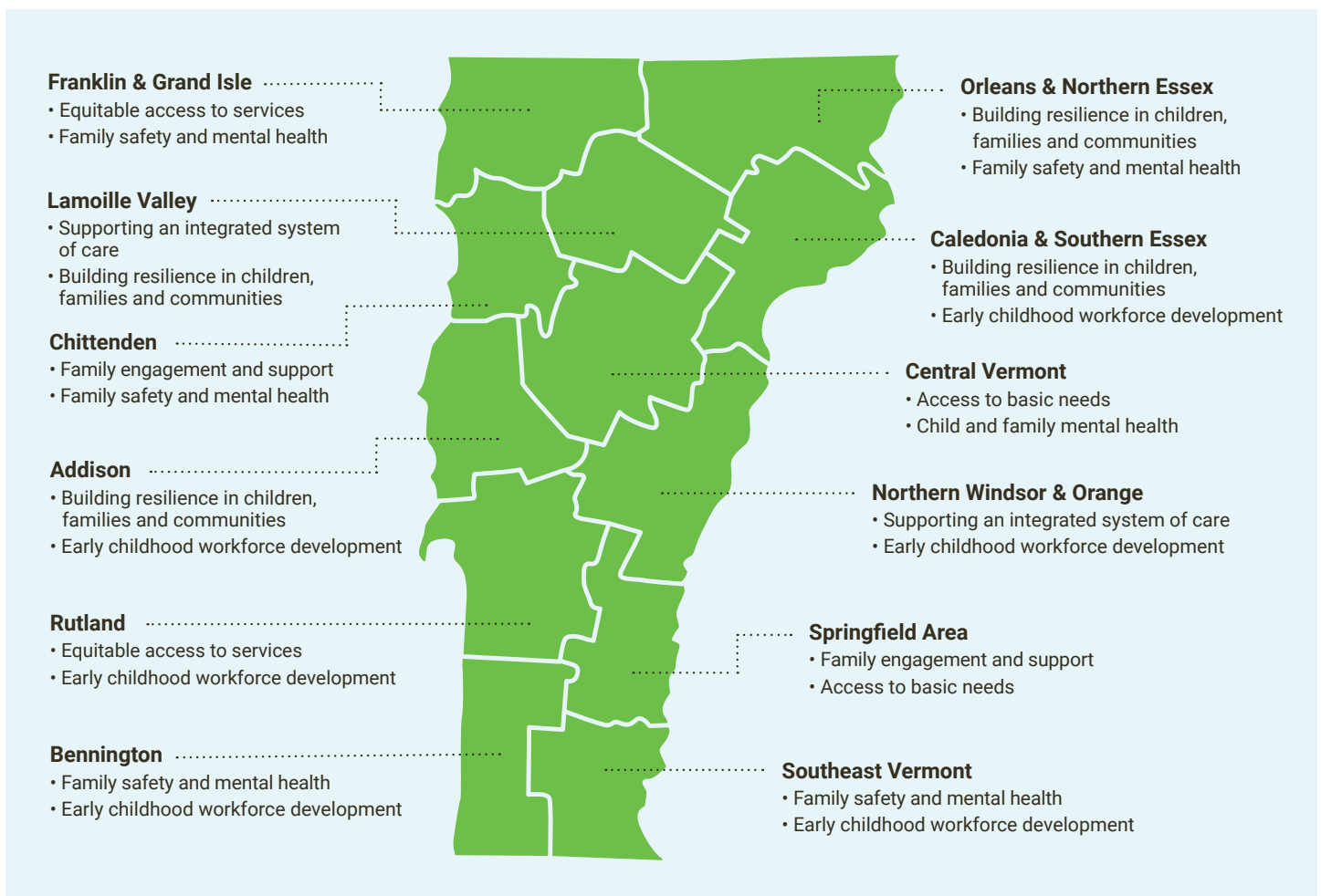
# ABOUT REGIONAL COUNCILS

Building Bright Futures' Regional Councils bring together early childhood stakeholders to identify gaps, share expertise and resources, elevate regional and family voices, and implement strategies in each respective region. These strategies include identifying gaps for children and families and aiming to improve access to services and supports across early care, health, and education for young children and families in their communities. Regional Council members are crucial to each stage of this process, both in official convenings of the Regional Councils and within the early childhood system more broadly.

The 12 Regional Councils are mandated to support an integrated system of early care, health, and education at the local level under Vermont Statute Title 33 § Chapter 46. In alignment with, and with support from, the State Advisory Council, Regional Councils are tasked with coordinating and implementing services in accordance with system and regional priorities. Regular Regional Council meetings are just one way that this mandate is fulfilled.

Early childhood stakeholders from across Vermont bring their perspectives together through Regional Councils 8-10 times a year. Participants at regional tables include professionals in physical and mental health, social services, basic needs, early childhood care and education, and preK-12 education; families of children under 9; and community members invested in the well-being of young children.

Annually, each Regional Council sets two regional priorities to guide their work. The map below illustrates the top two priorities of each region, showcasing the similarities and differences among the 12 regions in Vermont.



More information about each region, including Regional Council meetings, can be found at [buildingbrightfutures.org/what-we-do/regional-councils/](https://buildingbrightfutures.org/what-we-do/regional-councils/)