



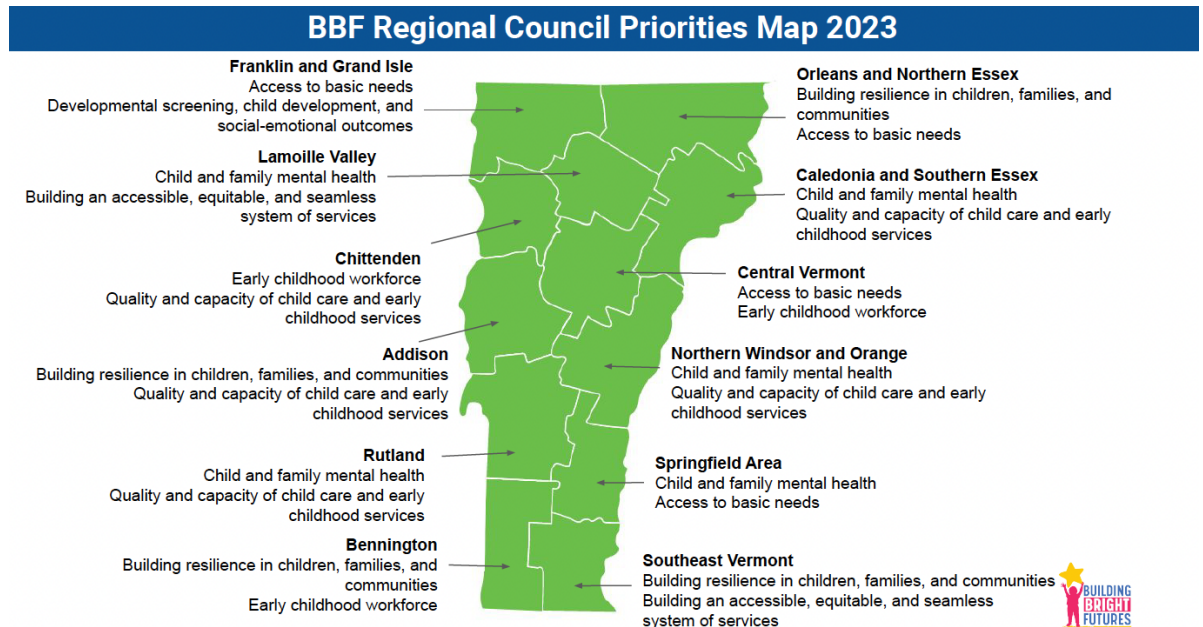
## Chittenden Regional Action Plan 2023-2024

Building Bright Futures' Regional Councils bring together early childhood stakeholders to identify gaps, share expertise and resources, elevate regional and family voices, and implement strategies in each respective region. These strategies include identifying gaps for children and families and aiming to improve access to services and supports across early care, health, and education for young children and families in their communities. Regional Council members are crucial to each stage of this process, both in official convenings of the Regional Councils and within the early childhood system more broadly.

The 12 Regional Councils are mandated to support an integrated system of early care, health, and education at the local level under Vermont Statute Title 33 § Chapter 46. In alignment with, and with support from, the State Advisory Council, Regional Councils are tasked with coordinating and implementing services in accordance with system and regional priorities. Regular Regional Council meetings are just one way that this mandate is fulfilled.

Early childhood stakeholders from across Vermont bring their perspectives together through Regional Councils 8-10 times a year. Participants at regional tables include professionals in physical and mental health, social services, basic needs, early childhood care and education, and pre-K-12 education; families of children under 9; and community members invested in the well-being of young children.

Annually, each Regional Council sets two regional priorities to guide their work. The map at right illustrates the top two priorities of each region, showcasing the similarities and differences among the 12 regions in Vermont.





## Chittenden Regional Council 2023-2024 Plan

Below you will find a plan outlining work to make progress for each priority as well as additional strategies and actions of the Chittenden Regional Council.

Activity/Function	Council Time	VECF/ Council Funds	Strategic Partner- ships	BBF Staff Time	BBF Network	Notes/Status
Regional-State Coordination via BBF Network						
Share information across early childhood partners	X				X	
Identify opportunities for partnership and resource alignment						
Acknowledge and address regional concerns through emerging issues doc, committees, SAC, etc.						
Increase alignment between regional and statewide work	X		X	X	X	
Convene regular Regional Council meetings						
<b>Priority Issue: Quality, capacity of child care and early childhood services</b> - Respond to system gaps to improve access for families to high-quality opportunities that meet their needs (child care, including pre-K, special education, mental health services, etc.)						
Discussion about gaps in quality, capacity to improve access (panel discussions, presentations)	X		X	X		Host panel discussion between pre-K site directors, early childhood providers, and regional pre-K coordinators in region
Gain deeper understanding via training, data, and presentations of the current landscape around pre-K, special education, mental health services, etc.	X	X		X		Special education and mental health system relationships (GAPS< OPPS< CHALL & POTENTIAL)
Identify & host/convene key partners working to address early childhood workforce related issues	X		X	X		City of Burlington, ECE Workforce Development, Vermont Association for the Education of Young

*Of note, this plan is a guide and is adaptable as priorities evolve, situations arise, and needs change.*



# Chittenden Regional Council 2023-2024 Plan

						Children. Follow implementation of the workforce component of the child care bill, Act 76
Identify opportunities for partnership and resource alignment						
Increase alignment between regional and statewide work	X		X	X	X	
Join workforce development tables and groups in the region	X			X	X	Engage the leadership team
<b>Priority Issue: Workforce Development</b> - Promote quality through training and professional advancement, support recruitment efforts, promote a stable workforce through economic security strategies (benefits, incentives, supplemental wages).						
Share information and efforts in the region related to quality and capacity of child care and early childhood education	X			X		Understand the quality rating systems in early education in the region
Share information and efforts in the region related to workforce development	X		X	X		BBF communication team to promote regional and statewide info related to Early Childhood Development
SPARQS (System for Program Access to Resources for Quality Supports) VT vs. STARS (Step Ahead Recognition System)	X		X	X		
Sponsor events and projects related to workforce development in the regions		X	X			Align Vermont Early Childhood Fund and the regional council funds
Support partner strategies and programs addressing Quality & Capacity	X	X	X	X		
Support partner strategies and programs addressing workforce development in the region or the network	X	X	X	X		Communication, outreach, build system to gather and monitor data, share best practices

*Of note, this plan is a guide and is adaptable as priorities evolve, situations arise, and needs change.*



## Chittenden Regional Council 2023-2024 Plan

Resources: Council members and partners, BBF Network, VECF grantees, Regional Manager, Regional Council funds

### Definitions

**Council Time** - Partners dedicating time to attend the council meeting, how the council time is used to build relationships, information sharing, and collaboration sharing accomplished together

**Resources** - Funds allocated to support council priorities by BBF, or awarded through other sources like the Vermont Early Childhood Fund or outside grants/sponsorships

**Strategic Partnerships** - Establishing or developing connections between the Council (Regional Manager or Council members) and other regional partners. This can be 1:1, attending other coalition meetings, or convening small working groups.

**BBF Staff Time** - Time dedicated by the Regional Manager or other BBF staff to support a council effort (communication, data, planning, etc.)

**BBF Network** - Elevating a regional gap or need through the BBF Network to inform decision-making. This could be submitting an issue to the 'emerging priorities' document, bringing an issue to a VECAP committee for further discussion, identifying data gaps, or informing BBF SAC policy recommendations.

*Of note, this plan is a guide and is adaptable as priorities evolve, situations arise, and needs change.*