

The State of Vermont's Children

2023 Year in Review

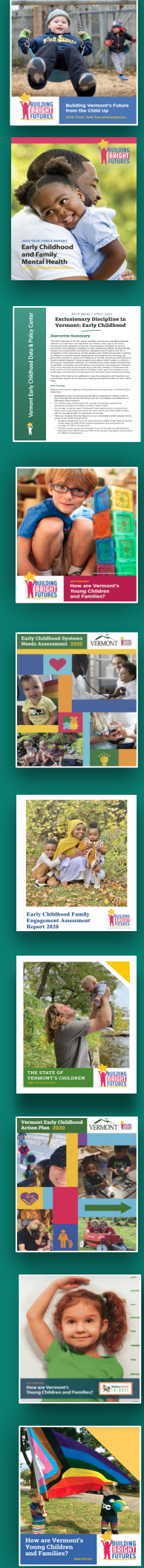
★ Celebrating 11 Years of Data to Inform ★
Early Childhood Policy & Decision-making

Presented by Building Bright Futures and
VermontKidsData.org

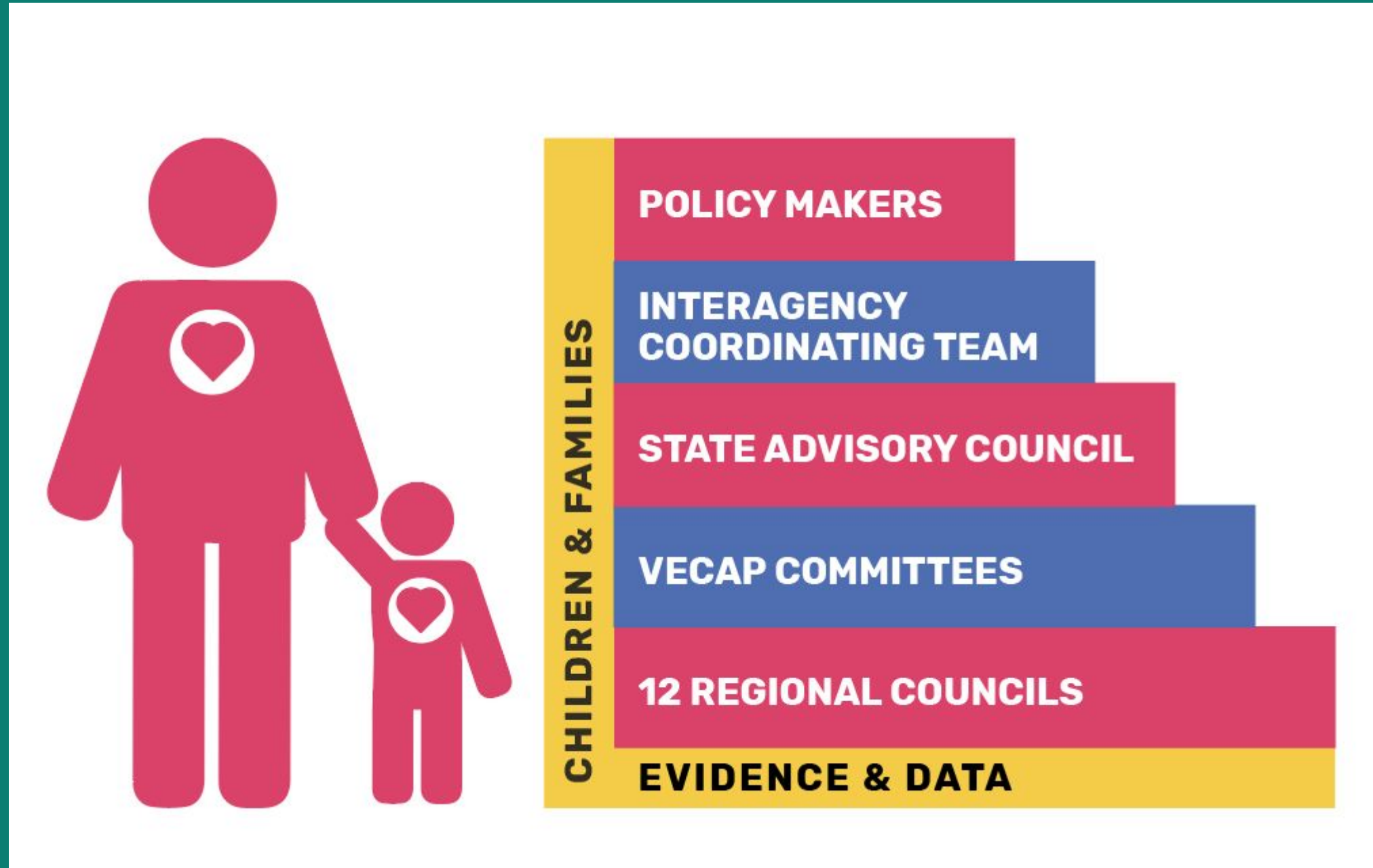
Thursday, January 18, 2024

THE STATE OF
VERMONT'S CHILDREN

2023 YEAR IN REVIEW



Building Bright Futures Early Childhood Infrastructure and 500+ Person Network



The Building Bright Futures State Advisory Council Network is charged by Title 33, Chapter 46 monitor Vermont's early childhood system and to serve as an accountability mechanism.





Data-driven Decision-making and Accountability

- BBF serves as a broker of high-quality up-to-date data and a trusted advisor.
- The State of Vermont's Children is Vermont's most objective, comprehensive, data-driven assessment of children and families.
- We are responsible for strengthening and transforming the way Vermont thinks about, and uses early childhood data.



Preview

Data Highlights

- Home prices outpaced income growth
- 16.1% of 3 to 8 year olds in Vermont have a mental health condition - 50% more than the U.S. as a whole
- 101 students were excluded in UPK from Sept. 2022 to Oct. 2023
- 59% of third graders were not reading proficiently in 2022 - up from 50% in 2019
- 25% of Vermont birthing parents were affected by a Perinatal Mood and Anxiety Disorder

Caledonia & Southern Essex

REGIONAL PRIORITIES:

- Child and family mental health.
- Quality and capacity of child care and early childhood services.

CHILD POPULATION¹ (2022)

3,106 children under 10

Decreased from 3,338 in 2017

CHILDREN LIVING IN POVERTY² (2022)

37.3% children under 12 (1,368)

Increased from 35.9% in 2017 (1,481)

PRE-TAX ANNUAL LIVING WAGE³ (2023)

\$96,067 (\$23.09/hr) Caledonia County
\$91,553 (\$22.01/hr) Essex County

CHILDREN RECEIVING HOMELESSNESS SUPPORTS⁵

113 children under 12

Caledonia and Essex Counties

CHILDREN IN OUT-OF-HOME CUSTODY⁴ (2023)

21 children under 9

Decreased from 38 in 2018

DEVELOPMENTAL SCREENING RATES⁶ (2021)

55% St Johnsbury HSA
50% White River Junction HSA

In the past 12 months for children under 3

⁶Under 185% of the Federal Poverty Level

Third Grade Reading All Third Grade Students Reading at or Above Proficient (Spring 2022)⁶

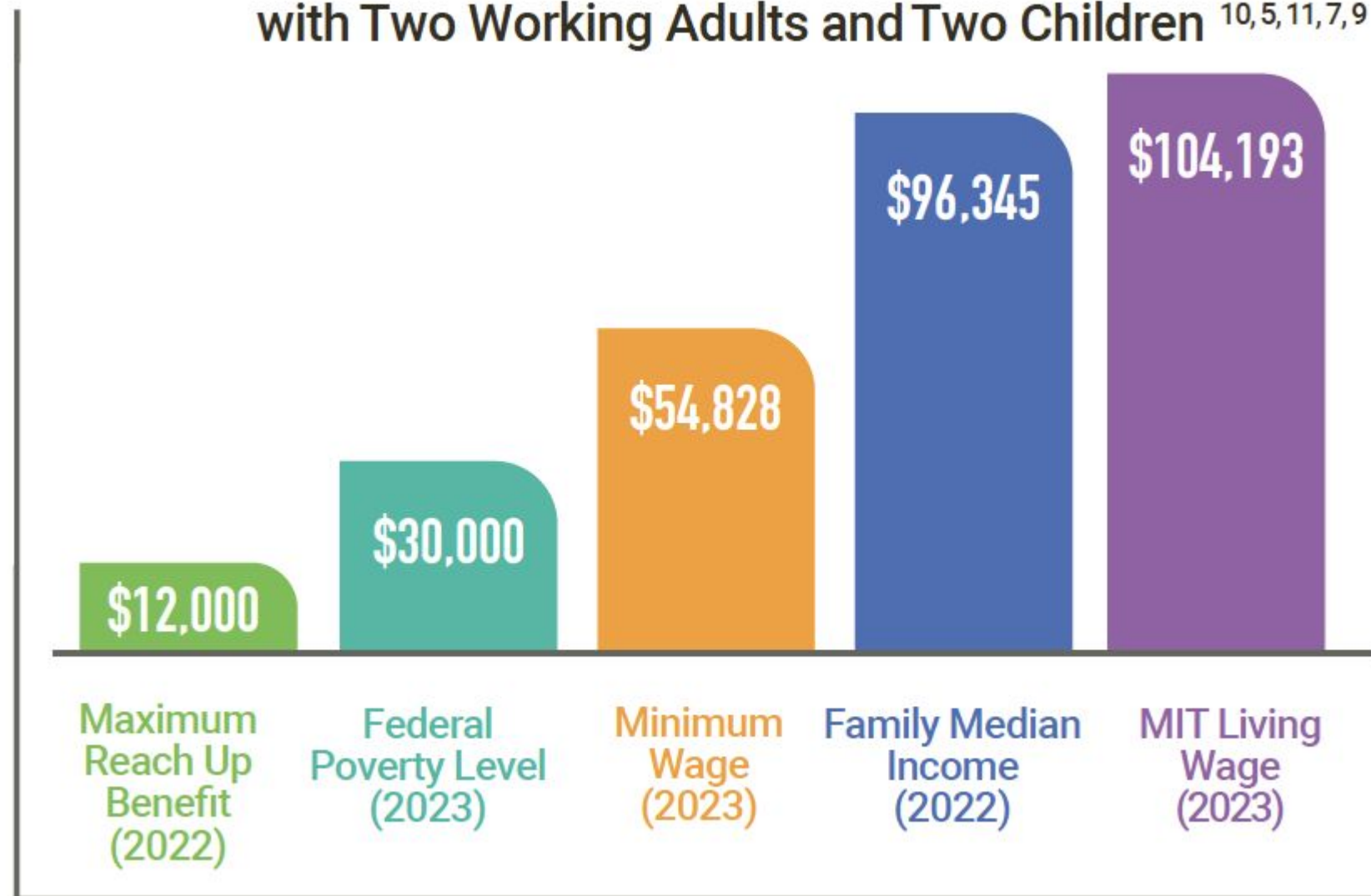
Supervisory Union/School District	All Students	Historically Marginalized Students
Caledonia Central SU	42.6%	21.7%
Kingdom East	25.7%	Not Available
Orange East SU	46.6%	35.8%
St. Johnsbury SD	38.6%	26.9%

Perinatal Health and Well-Being Panel Questions & Discussion

Data limitations of topics covered today can be found in full report

Cost of Living

Vermont Wage Benchmarks for a Family of Four with Two Working Adults and Two Children ^{10,5,11,7,9}



- The living wage is 90% higher than the minimum wage for two working adults
- The MIT Living Wage does not include funds for savings, emergency expenses, or expenses like meals in restaurants
- Despite a rise in median family income from 2021-2022 the value fell 1.5% after adjusting for inflation



Housing and Homelessness

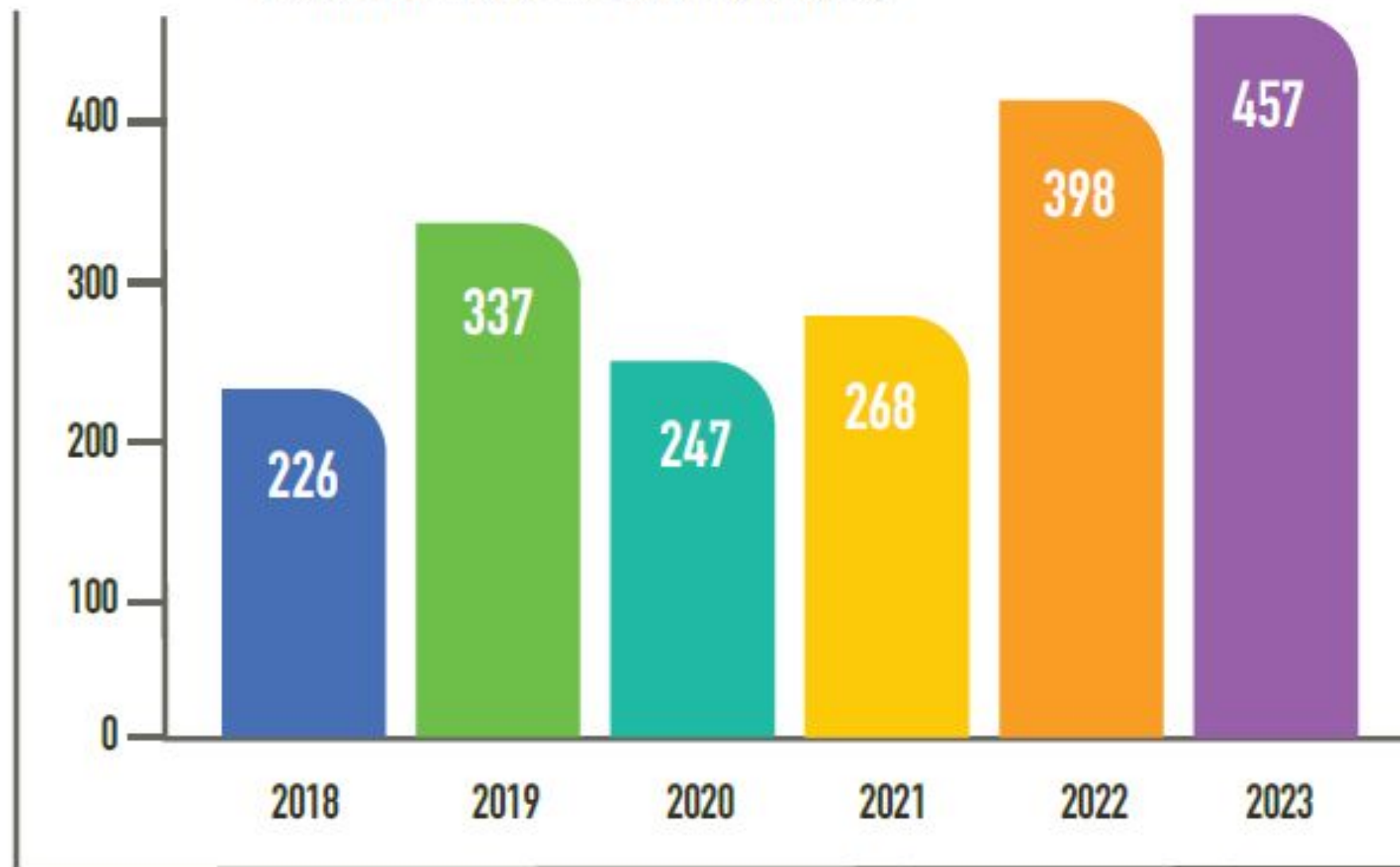


- 29.8% of home owning households and 47% of renting households are cost-burdened by their rent or mortgage
- Rental vacancy rate of 3.5% in 2021
- Homeowner vacancy rate of 1% in 2022



Housing and Homelessness

Students Under 9 Eligible for McKinney-Vento Homelessness Assistance¹⁹



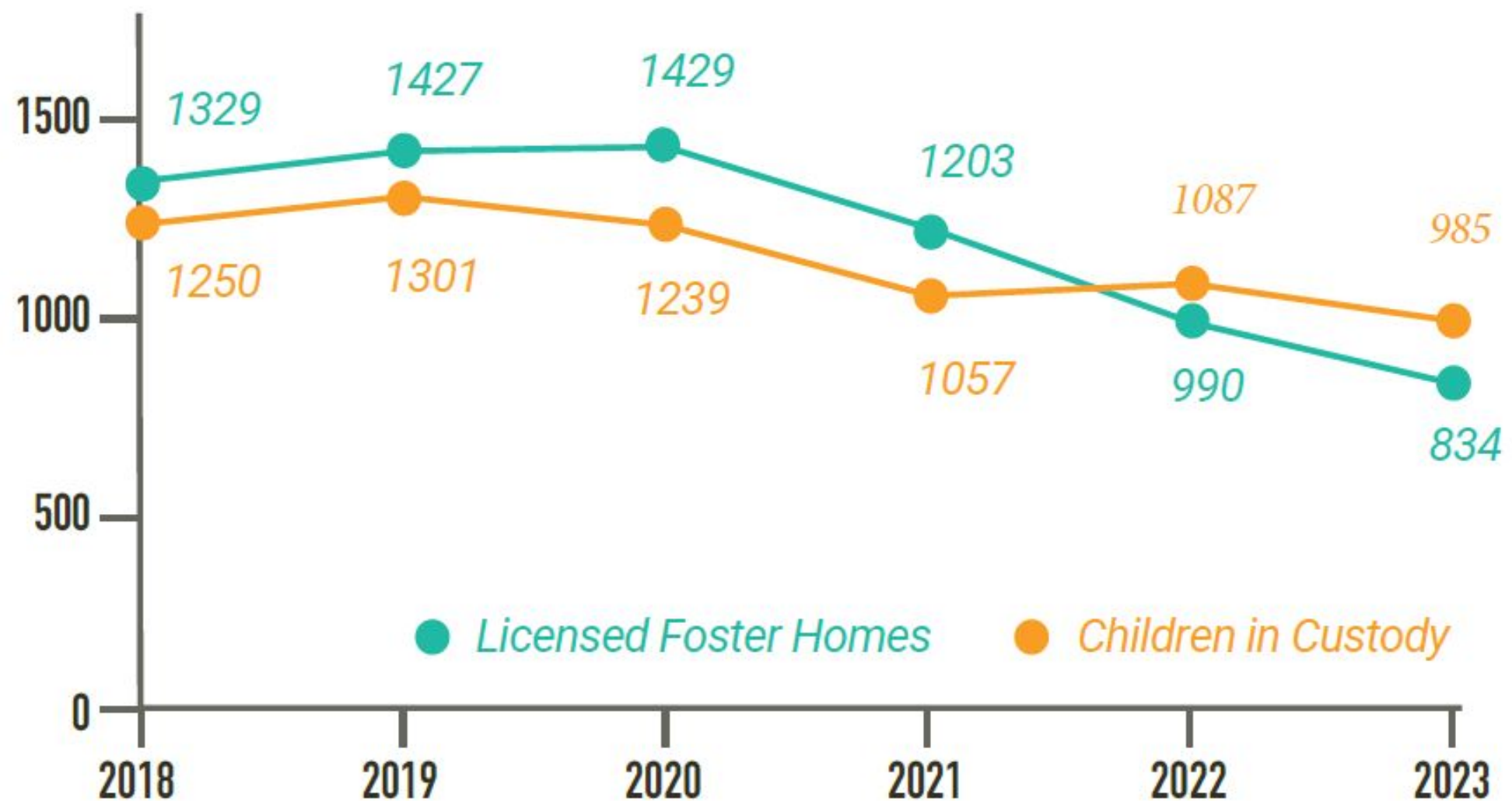
Striking increases in:

- Vermont homeless children under 9 enrolled in school
- 85% increase in the number of unsheltered people in households with children under 18 (1,166 in 2023)



Trauma Informed Care and Children in Custody

Vermont Licensed Foster Homes and Children in Custody 2018 to 2023¹⁰

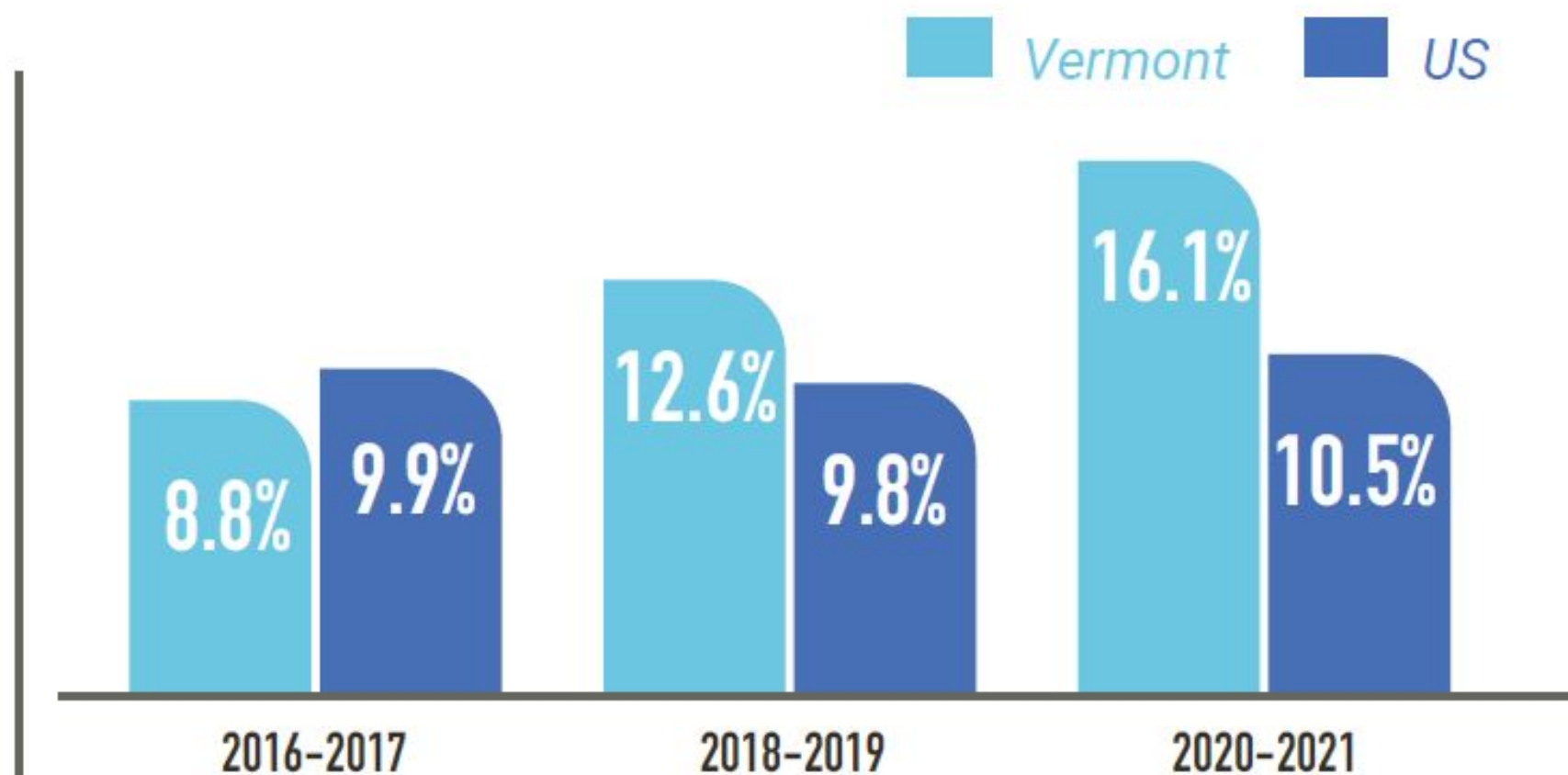


- 985 total children in custody in 2023; 474 or 48% of those were under 9 years old
- 37% decrease in licensed foster homes between 2018 and 2023



Mental Health for Children and Families

Children with ADHD, Anxiety, Depression, and/or Behavior or Conduct Condition, Vermont and U.S.¹

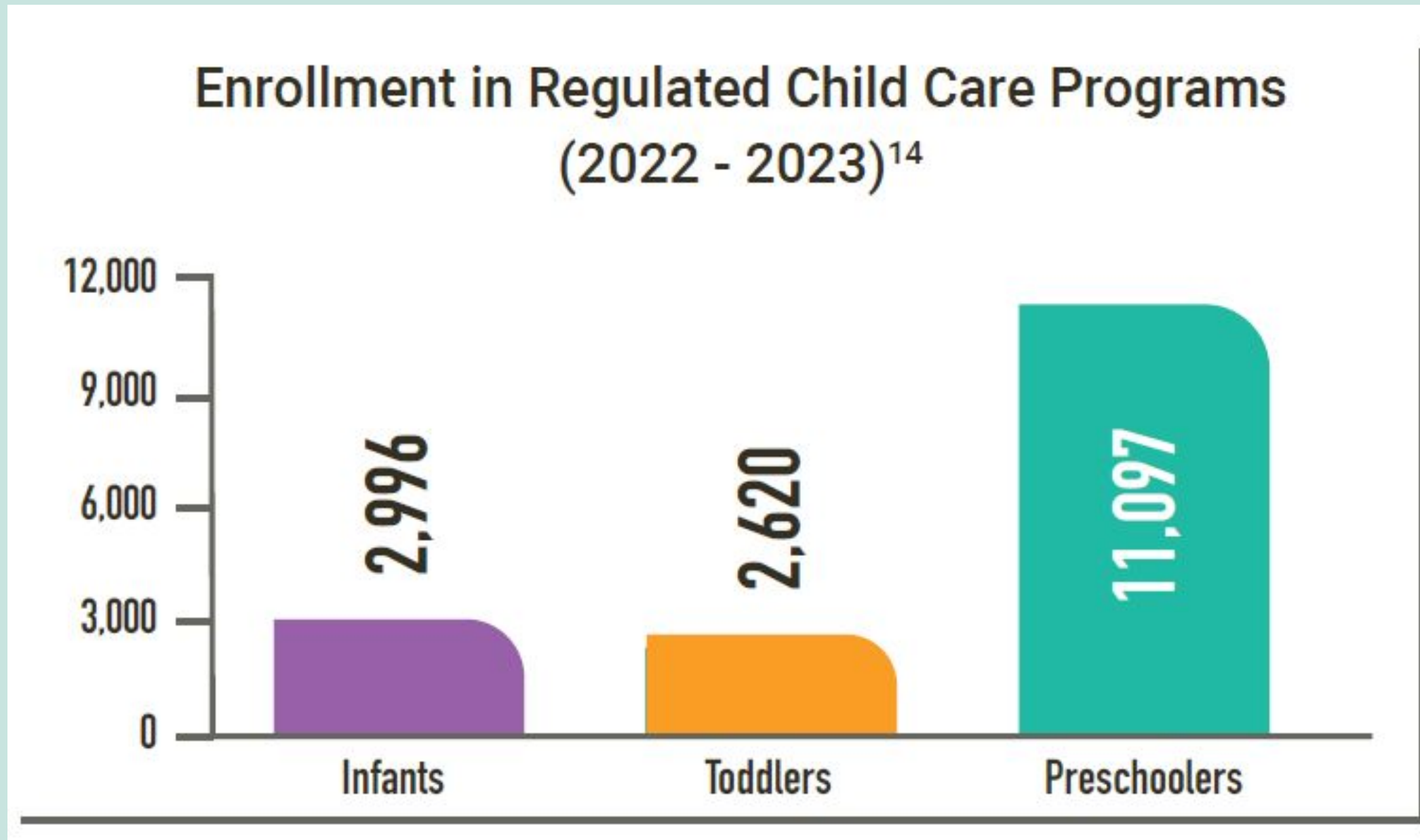


- Inadequate number of residential treatment beds
- Fewer children receiving routine mental health services
- 23% turnover rate for mental health professionals
- 83% increase in children ages 3-8 with a mental health condition



Child Development & Education

Early Care and Education

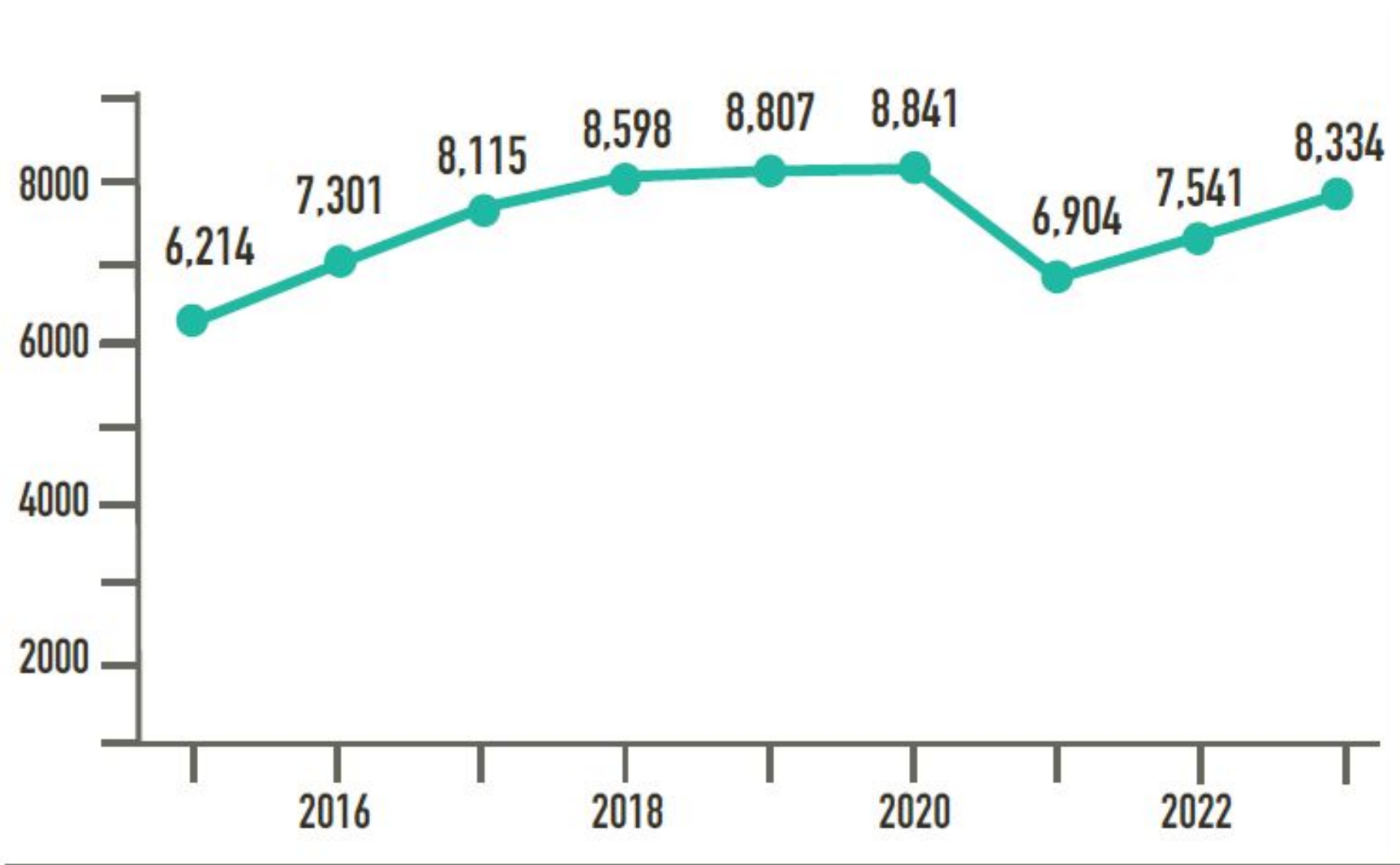


- Child Care Enrollment: **16,707** children enrolled in regulated early childhood education programs.
- Afterschool: **11,233** regulated slots for school aged children (6-13)



Universal Prekindergarten Education

Universal Prekindergarten Education Enrollment
by School Year and Fall 2022¹⁹



- 8,432 prequalified slots
- 58% in privately operated programs
- 42% in school based programs
- 2,000 fewer students were enrolled in UPK in the 2020-2021 school year



Child Development & Education

Exclusionary Discipline

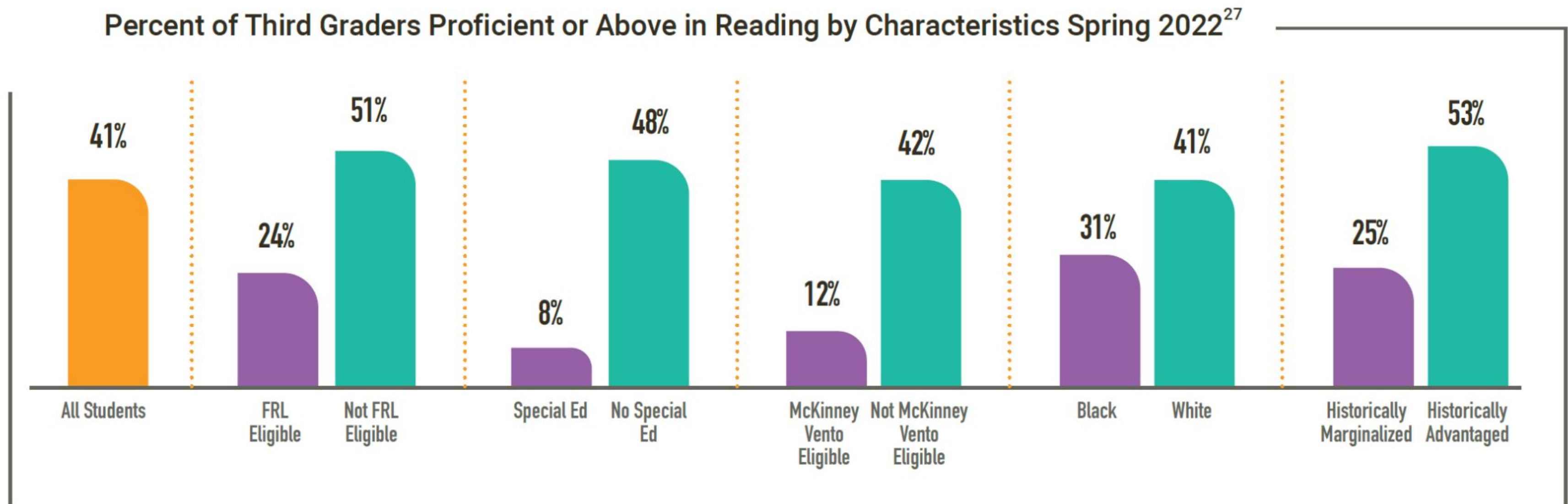


- Universal Prekindergarten Education
- 101 incidents of exclusion
- 5 incidents of restraint and seclusion



Third Grade Reading and Math Assessments

- 41% of all students reading proficiently in 2022 down from 50% in 2019
- 4-year period of inconsistent assessment data



¹ Historically Marginalized: Historically Marginalized Students are those students who have been historically underserved by educational institutions for any one, or more than one, characteristic including ethnic and racial minorities, English Learners, students with Free and Reduced Lunch, students with disabilities, and students who are migrant, foster, or homeless. Historically Privileged Students are those students who have none of the characteristics that are associated with being underserved.²⁸



Perinatal Mood and Anxiety Disorders

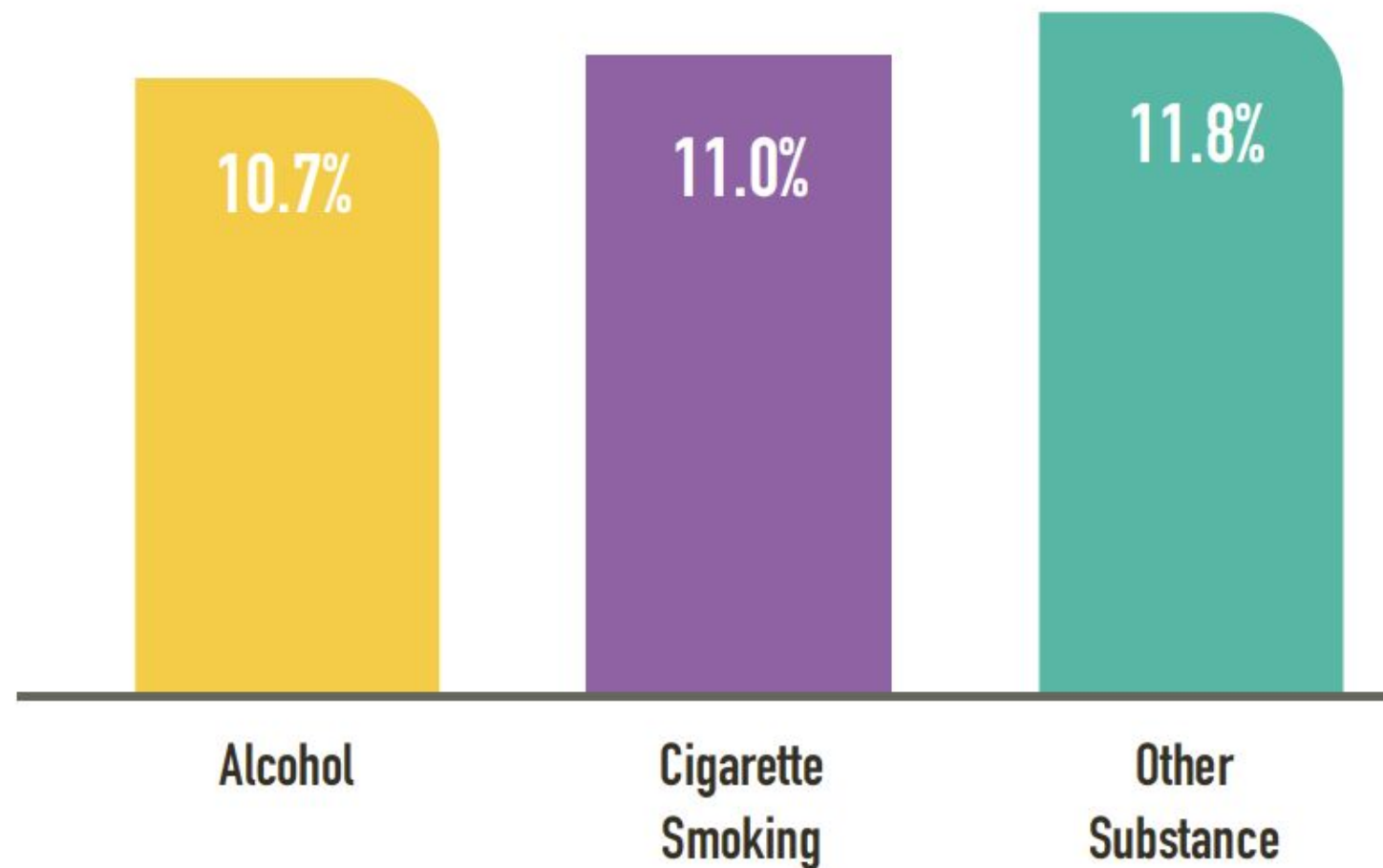


- PMADs affected more than 25% of pregnant and postpartum people in Vermont
- Untreated PMADs result in an estimated cost of \$36,000 per birthing parent and their child in Vermont



Substance Use During Pregnancy

Substance Use During Pregnancy (2021 Births)⁹



- For children born in 2021, at least one substance was used in more than 1 in 10 pregnancies
- 100% of deaths reviewed by Maternal Mortality Review Panel were directly related to substance use disorder.



Expert Panelists

- Ilisa Stalberg, MSS, MLSP, SAC Public Co-Chair;
 - Director of Family and Child Health - Vermont Department of Health
- Amy Wenger, RN-IBCLC
 - Maternal Child Health Clinical Manager
- JennRose Brittenham
 - Lived Experience Speaker



Goal 1: All children have a healthy start

Invest in Perinatal Supports

- **Invest** in statewide strategies that center early relational health to ensure families are supported across clinical and community settings during the critical perinatal period, including after experiencing the loss of a child or loss of a caregiver.
- **Fund** the expansion of Developmental Understanding and Legal Collaboration for Everyone (DULCE) approach sites.
- **Invest** in peer- and community-based strategies such as multi agency collaboration teams, like regional CHARM/Community Response teams, to ensure families have the supports they need through a strength based approach and in recognition that Vermont's maternal mortality incidences have a concerning overlap with substance use disorders (SUD).
- **Ensure** continuity of care and high-quality services are available for the perinatal population.
- **Expand** Children's Integrated Services (CIS) supports past the 8-week postpartum period to the full year postpartum for the birthing person, in alignment with postpartum Medicaid expansion.
- **Pursue** strategies that center equitable services and birth-related outcomes for parents/caregivers of color, including expanding Medicaid coverage to doula services.



The State of Vermont's Children

2023 Year in Review

www.buildingbrightfutures.org
www.VermontKidsData.org

Download or request a free hard copy

THE STATE OF
VERMONT'S CHILDREN
2023 YEAR IN REVIEW

