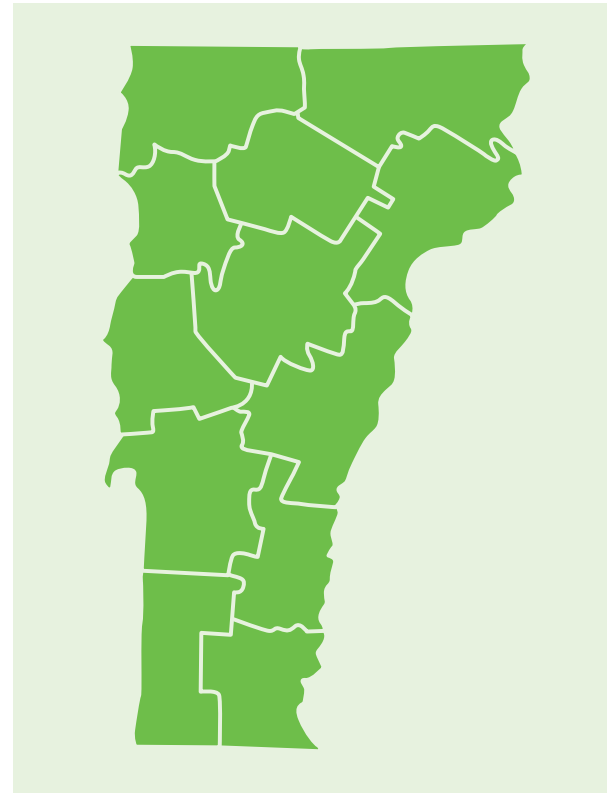


# Introduction to Regional Profiles

The following regional profiles offer a snapshot of selected indicators of child and family well-being for each of Vermont's 12 regions, which line up with the Agency of Human Services Districts. Each indicator represents the most high-quality, up-to-date data that is available at the regional level and includes the same data from five years prior for comparison.

Each profile includes a highlight of a Regional Council success as well as five key data points: 1. The estimated population of children under 10, 2. The percentage of children under 12 living in households with incomes below 185% of the Federal Poverty Level (the benchmark for many benefit programs), 3. The number of children under 9 living in out-of-home custody, 4. The percentage of children ready for kindergarten, and 5. The percentage of third grade children reading at or above "proficient."



## Current Status of All Vermont Children

### CHILD POPULATION<sup>1</sup> (2021)

**60,364** children under 10

Decreased from 62,535 in 2016

### CHILDREN LIVING IN POVERTY<sup>2\*</sup> (2020)

**30.4%** children under 12 (22,125)

Decreased from 35.1% in 2015 (26,732)

### CHILDREN IN OUT OF HOME CUSTODY<sup>3</sup> (2022)

**541** children under 9

Decreased from 618 in 2017

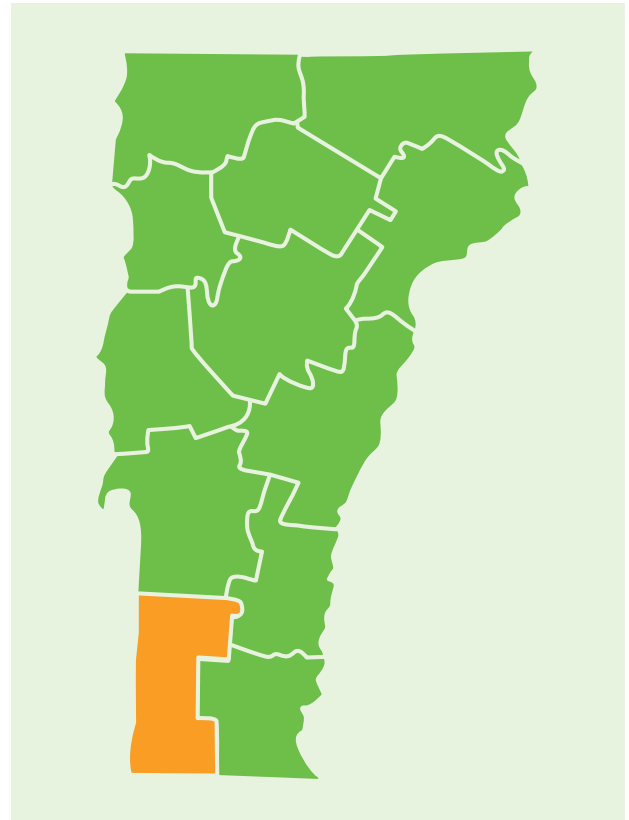
*\*Under 185% of the Federal Poverty Level*

## Educational Assessments

VERMONT STUDENTS	KINDERGARTEN READINESS <sup>4</sup> (FALL 2021)	3RD GRD READING PROFICIENCY <sup>5</sup> (SPRING 2021)
All Students	85%	42.5%
Male	82%	39.3%
Female	89%	45.9%
Free and Reduced Lunch Eligible	74%	25.4%
Not Free and Reduced Lunch Eligible	91%	54.2%
Attended Publicly Funded PreK	87%	NA
Did Not Attend Publicly Funded PreK	80%	NA
Historically Marginalized	NA	27.4%
Not Historically Marginalized	NA	59.1%

# Bennington

In order to ensure that children and families have access to high-quality opportunities, the early childhood workforce must have access to high-quality training and professional advancement. This issue was the focus of the Bennington Regional Council in 2022, in partnership with the Bennington Quality Task Force and with input from the Bennington Early Childhood Network. Following a pause during the COVID-19 pandemic, the Quality Task Force reestablished in 2022, coordinating trainings on a range of topics, from CPR to social-emotional learning, and reinstating developmental screenings using the Devereux Early Childhood Assessment (DECA). The Bennington Quality Task Force will continue to work with Northern Lights at the Community College of Vermont (CCV), to identify the gaps in early childhood professional development that exist in the Bennington area, and strategize on how to meet these needs in the region.



## Current Status

### CHILD POPULATION<sup>1</sup> (2021)

**3,509** children under 10

Decreased from 3,605 in 2016

### CHILDREN LIVING IN POVERTY<sup>2\*</sup> (2020)

**34.9%** children under 12 (1,484)

Decreased from 49.4% in 2015 (2,137)

### CHILDREN IN OUT OF HOME CUSTODY<sup>3</sup> (2022)

**57** children under 9

Increased by from 49 in 2017

*\*Under 185% of the Federal Poverty Level*

## Educational Assessments

### SUPERVISORY UNION / SCHOOL DISTRICT

Battenkill Valley SU .....  
 Bennington Rutland SU .....  
 Southwest Vermont SU .....  
 Windham Southwest SU .....

### KINDERGARTEN READINESS<sup>4</sup> (FALL 2021)

Not Available .....  
 88% .....  
 78% .....  
 92% .....

### 3RD GRD READING PROFICIENCY<sup>5</sup> (SPRING 2021)

50.0% .....  
 49.1% .....  
 27.2% .....  
 37.5% .....

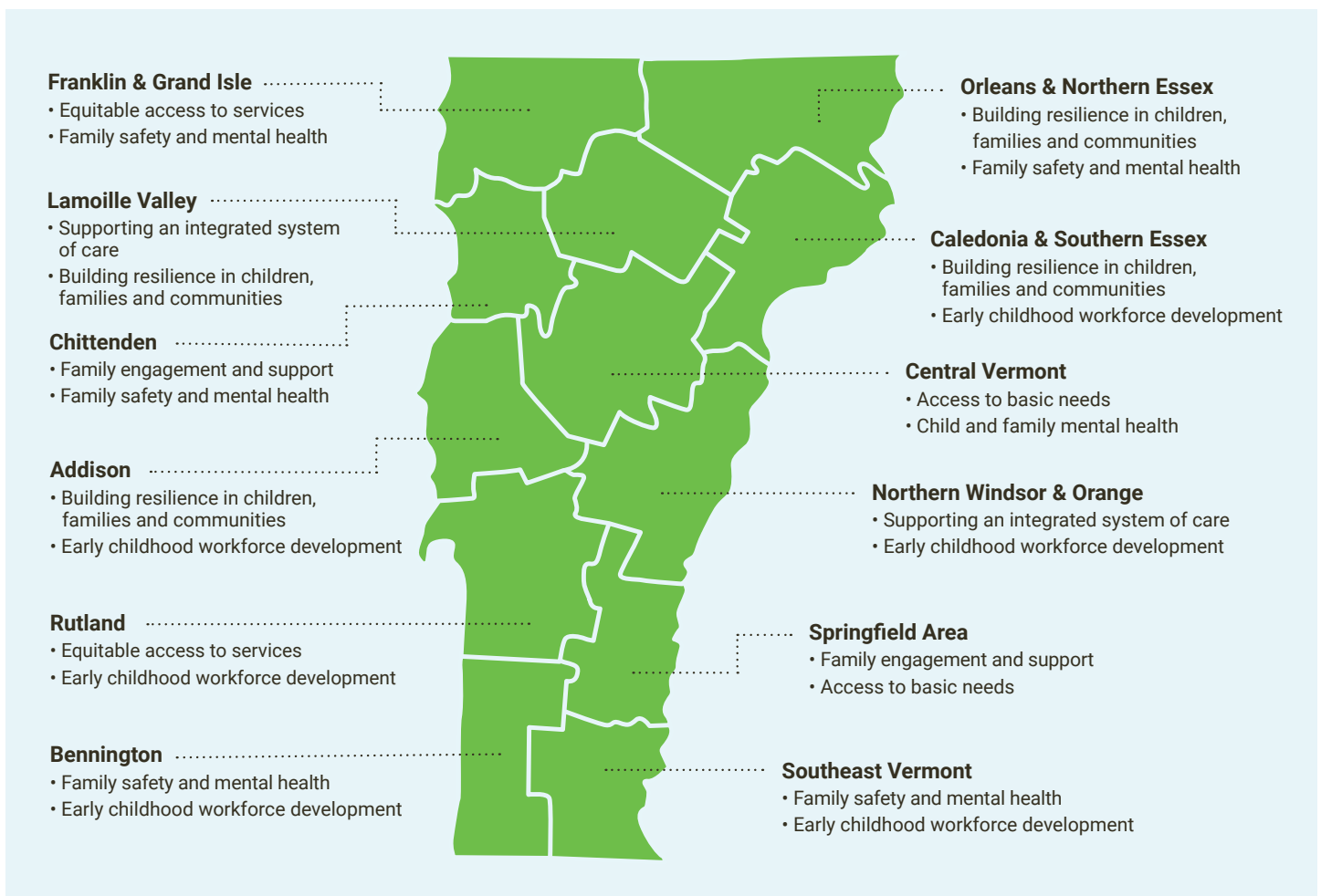
# ABOUT REGIONAL COUNCILS

Building Bright Futures' Regional Councils bring together early childhood stakeholders to identify gaps, share expertise and resources, elevate regional and family voices, and implement strategies in each respective region. These strategies include identifying gaps for children and families and aiming to improve access to services and supports across early care, health, and education for young children and families in their communities. Regional Council members are crucial to each stage of this process, both in official convenings of the Regional Councils and within the early childhood system more broadly.

The 12 Regional Councils are mandated to support an integrated system of early care, health, and education at the local level under Vermont Statute Title 33 § Chapter 46. In alignment with, and with support from, the State Advisory Council, Regional Councils are tasked with coordinating and implementing services in accordance with system and regional priorities. Regular Regional Council meetings are just one way that this mandate is fulfilled.

Early childhood stakeholders from across Vermont bring their perspectives together through Regional Councils 8-10 times a year. Participants at regional tables include professionals in physical and mental health, social services, basic needs, early childhood care and education, and preK-12 education; families of children under 9; and community members invested in the well-being of young children.

Annually, each Regional Council sets two regional priorities to guide their work. The map below illustrates the top two priorities of each region, showcasing the similarities and differences among the 12 regions in Vermont.



More information about each region, including Regional Council meetings, can be found at [buildingbrightfutures.org/what-we-do/regional-councils/](https://buildingbrightfutures.org/what-we-do/regional-councils/)