

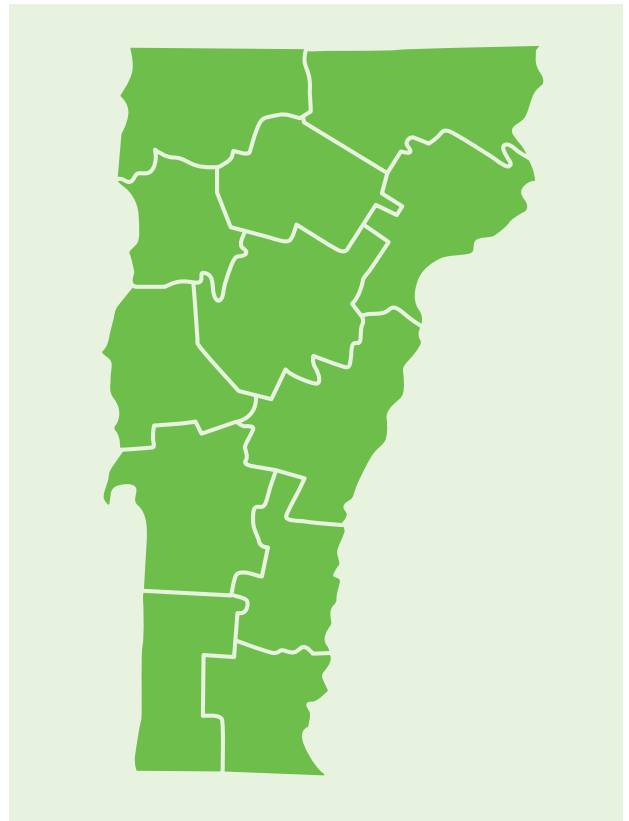
Introduction to Regional Profiles

While Vermont is a relatively small state with commonalities across communities, each region is unique. The following regional profiles offer a snapshot of selected indicators of child and family well-being for each of Vermont’s 12 regions. Each indicator includes the most high-quality, up-to-date data that is available at the regional level and includes the same data from five years prior for comparison.

Each Regional Council is addressing the early childhood workforce crisis with a regional focus based on the strengths and opportunities available as part of the Council Action Plan. Each profile outlines one way that the Regional Council is addressing these challenges and moving forward the **VECAP Goal 3: All Children and Families Have Access to High-Quality Opportunities That Meet Their Needs.**

For more information on the early childhood workforce crisis, see the Spotlight starting on page 10.

Please note that due to “test administration during 2020-2021 [being] impacted by several, novel variables”, proficiency in third grade reading assessments is not included for each School District/Supervisory Union.⁶⁷



Current Status of All Vermont Children

CHILD POPULATION¹¹ (2019)

53,821 children under 9

Decreased by 5% from 56,495 in 2014

CHILDREN LIVING IN POVERTY⁶⁹ (2019)

35.7% children under 6 (12,382)

Decreased by 16% from 42.5% - 15,628 in 2014

CHILDREN IN OUT OF HOME CUSTODY³⁵ (2021)

520 children under 9

Decreased by 28% from 721 in 2016

Educational Assessments

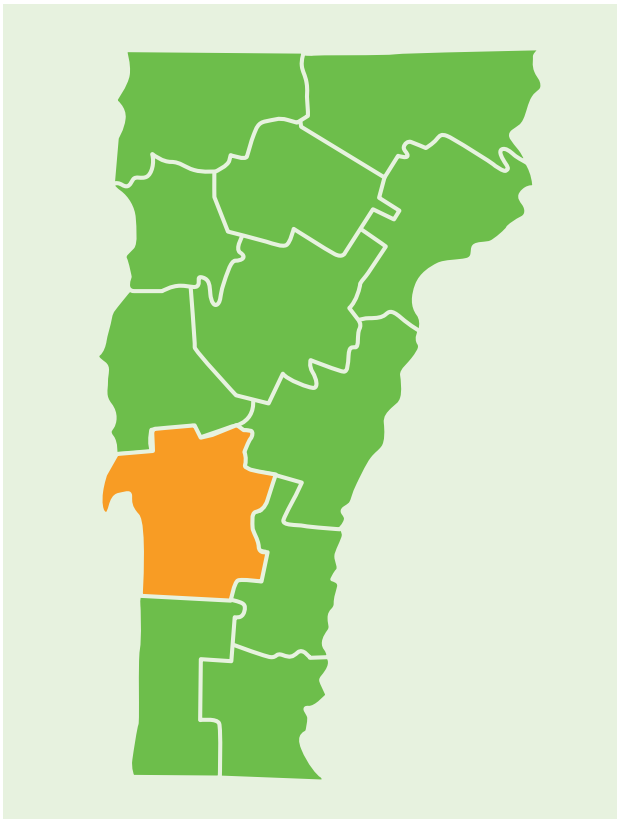
VERMONT STUDENTS

All Students	86%
Boys	82%
Girls	91%
Free and Reduced Lunch Eligible	77%
Not Free and Reduced Lunch Eligible	89%
Attended Publicly Funded PreK	87%
Did Not Attend Publicly Funded PreK	82%
Percent of Students Surveyed	90%

KINDERGARTEN READINESS⁶⁸ (FALL 2020)

Rutland

The Rutland Regional Council has taken a leadership role in addressing the workforce crisis, not only in the early childhood fields, but with stakeholders across sectors throughout Rutland County. The Council has convened a Workforce Roundtable in order to both align strategies and streamline the use of limited resources, and to ensure that the early childhood workforce is included in the larger regional planning. The working group representatives include the Rutland Chamber of Commerce, Rutland Regional Medical Center, the Vermont Office of Workforce Development, the Stafford Technical Center, and United Way. The Council is also using this opportunity to ensure an equity lens for the strategies that will be developed as well as conducting the process and considering what might have been left out of the conversation. This includes asking questions including “Are there barriers to the strategies we are recommending?” “Are there any potential unintended consequences for specific groups/populations?” Collaborating with partners beyond the early childhood fields while ensuring the use of an equity lens is just one way that the Rutland Regional Council is moving forward **VECAP Goal 3: All Children and Families Have Access to High-Quality Opportunities That Meet Their Needs.**



Current Status

CHILD POPULATION¹¹ (2019)

4,848 children under 9

Decreased by 4% from 5,071 in 2014

CHILDREN LIVING IN POVERTY⁶⁹ (2019)

39.5% children under 6 (1,186)

Decreased by 15% from 46.3% - 1,462 in 2014

CHILDREN IN OUT OF HOME CUSTODY³⁵ (2021)

74 children under 9

Decreased by 9% from 81 in 2016

Educational Assessments

SUPERVISORY UNION / SCHOOL DISTRICT

SUPERVISORY UNION / SCHOOL DISTRICT	KINDERGARTEN READINESS ⁶⁸ (FALL 2020)
Slate Valley Unified Union SD	90.2%
Bennington Rutland SU	87.2%
Greater Rutland County SU	85.8%
Mill River Unified Union SD	69.6%
Rutland City SD	76.2%
Rutland Northeast SU	84.9%
Two Rivers SU	88.6%
Windsor Central SU	98.3%

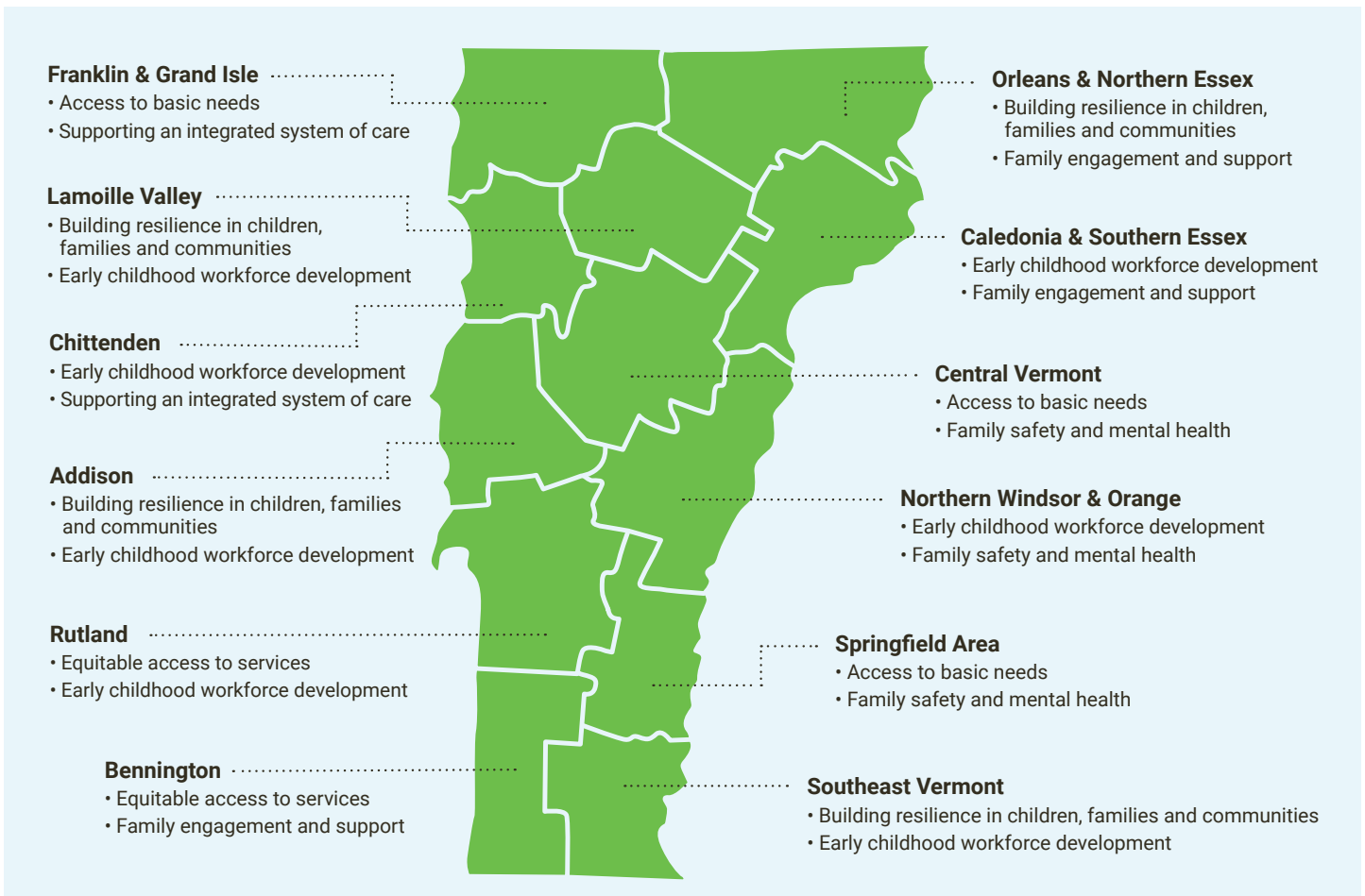
ABOUT REGIONAL COUNCILS

Building Bright Futures’ Regional Councils bring together early childhood stakeholders to identify gaps; share expertise and resources to break down silos; elevate regional and family voice; and implement strategies to respond to the needs of each and every child and family in their respective area. Regional Council members are crucial to each stage of this process, both in official convenings of the Regional Councils, and within the early childhood system more broadly.

The 12 Regional Councils are mandated to support an integrated system of early care, health, and education at the local level under Vermont Statute Title 33 § Chapter 46. In alignment with, and with support from, the State Advisory Council, Regional councils are tasked with coordinating and implementing services in accordance with system and regional priorities. Regular Regional Council meetings are just one way that this mandate is fulfilled.

Statewide, nearly 250 people bring their perspectives together through Regional Councils on a monthly basis. Early childhood stakeholders across regional tables include professionals in physical and mental health, social services, basic needs, early childhood education, PreK-12 education, families of children under 9, and community members invested in the well-being of young children.

Each Regional Council has an action plan to guide decisions and activities. While each plan supports a local comprehensive early childhood system, two regional priorities are set by Regional Councils annually to share across the state. The map below presents the top two priorities of each region which showcases the strength of the regional council network in local priority setting, as well as the connections and variation between the 12 regions in Vermont.



More information about each region including monthly council meetings and updates can be found at buildingbrightfutures.org/what-we-do/regional-councils/