

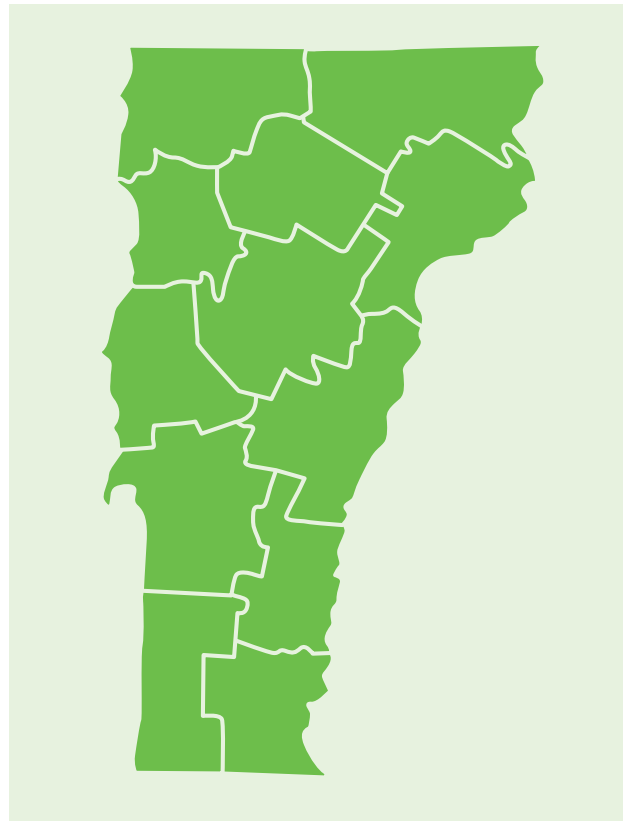
# Introduction to Regional Profiles

While Vermont is a relatively small state with commonalities across communities, each region is unique. The following regional profiles offer a snapshot of selected indicators of child and family well-being for each of Vermont’s 12 regions. Each indicator includes the most high-quality, up-to-date data that is available at the regional level and includes the same data from five years prior for comparison.

Each Regional Council is addressing the early childhood workforce crisis with a regional focus based on the strengths and opportunities available as part of the Council Action Plan. Each profile outlines one way that the Regional Council is addressing these challenges and moving forward the **VECAP Goal 3: All Children and Families Have Access to High-Quality Opportunities That Meet Their Needs.**

*For more information on the early childhood workforce crisis, see the Spotlight starting on page 10.*

Please note that due to “test administration during 2020-2021 [being] impacted by several, novel variables”, proficiency in third grade reading assessments is not included for each School District/Supervisory Union.<sup>67</sup>



## Current Status of All Vermont Children

### CHILD POPULATION<sup>11</sup> (2019)

**53,821** children under 9

Decreased by 5% from 56,495 in 2014

### CHILDREN LIVING IN POVERTY<sup>69</sup> (2019)

**35.7%** children under 6 (12,382)

Decreased by 16% from 42.5% - 15,628 in 2014

### CHILDREN IN OUT OF HOME CUSTODY<sup>35</sup> (2021)

**520** children under 9

Decreased by 28% from 721 in 2016

## Educational Assessments

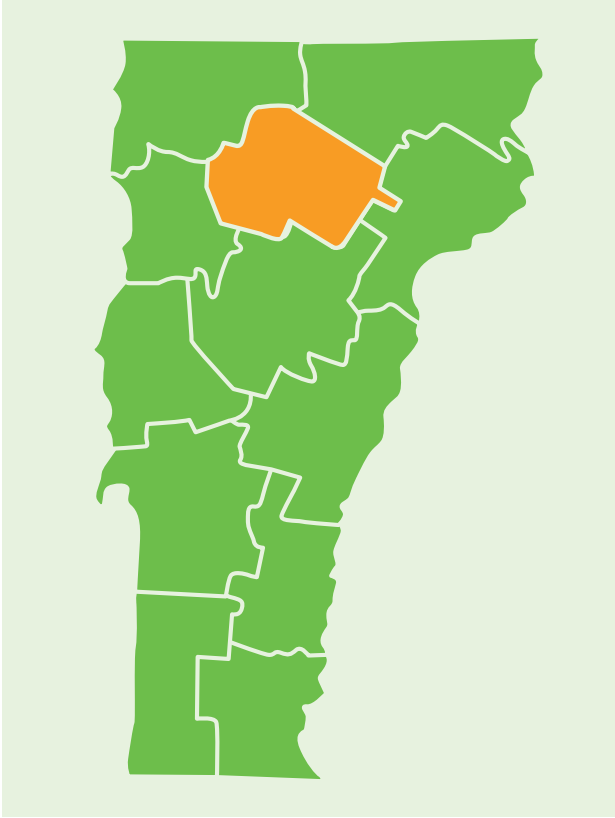
### VERMONT STUDENTS

All Students .....	86%	.....
Boys .....	82%	.....
Girls .....	91%	.....
Free and Reduced Lunch Eligible .....	77%	.....
Not Free and Reduced Lunch Eligible .....	89%	.....
Attended Publicly Funded PreK .....	87%	.....
Did Not Attend Publicly Funded PreK .....	82%	.....
Percent of Students Surveyed .....	90%	.....

### KINDERGARTEN READINESS<sup>68</sup> (FALL 2020)

# Lamoille Valley

The Lamoille Valley Regional Council has identified early childhood workforce development as one of two priorities in line with the focus of the regional Working Communities Challenge Grant. The focus on workforce transitions and reducing systemic barriers to work has led to the implementation of the Step Up to Child Care program which prepares individuals with the training, internship experience, and meets the regulatory requirements to enter the workforce at the end of 16 weeks in partnership with Green Mountain Technical and Career Center, Northern Lights at CCV, and the Step up to Child Care Regional Planning Team. In addition to the fundamentals and CPR/First Aid courses, the curriculum includes a small business course to enable home child care providers to be successful and sustainable businesses. The Step Up to Child Care was originally developed and piloted at Northeast Kingdom Learning Services. This expanded pilot program is set to meet the urgent Lamoille Valley regional needs as well as to determine the feasibility of statewide implementation. This is just one way that the Lamoille Valley Regional Council is moving forward **VECAP Goal 3: All Children and Families Have Access to High-Quality Opportunities That Meet Their Needs.**



## Current Status

### CHILD POPULATION<sup>11</sup> (2019)

**2,874** children under 9

Decreased by 8% from 3,109 in 2014

### CHILDREN LIVING IN POVERTY<sup>69</sup> (2019)

**41.6%** children under 6 (758)

Decreased by 5% from 43.9% - 887 in 2014

### CHILDREN IN OUT OF HOME CUSTODY<sup>35</sup> (2021)

**28** children under 9

Increased by 22% from 23 in 2016

## Educational Assessments

### SUPERVISORY UNION / SCHOOL DISTRICT

Lamoille North SU .....	88.4% .....
Lamoille South SU .....	89.3% .....
Orleans Southwest SU .....	91.7% .....

### KINDERGARTEN READINESS<sup>68</sup> (FALL 2020)

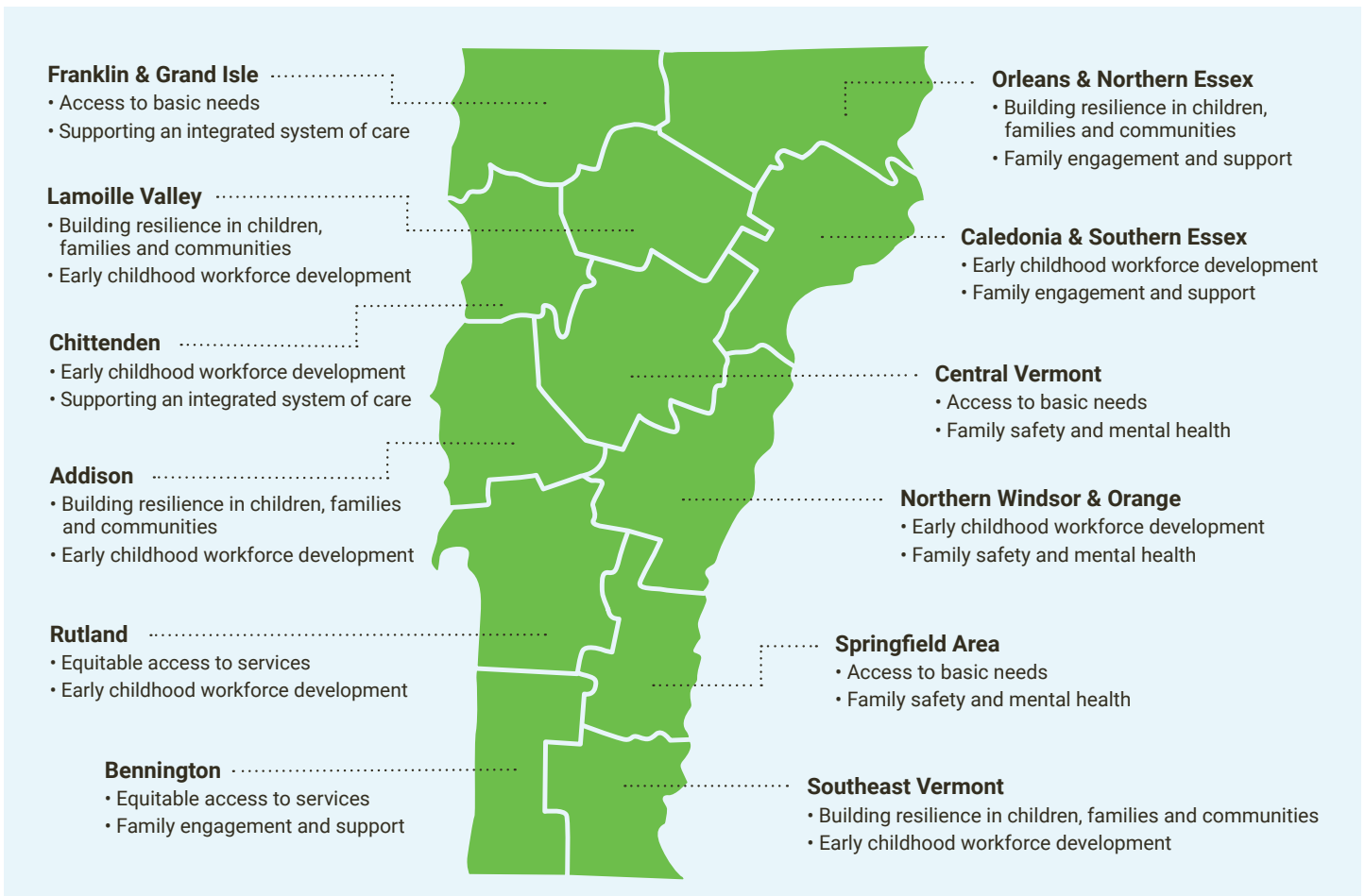
# ABOUT REGIONAL COUNCILS

Building Bright Futures’ Regional Councils bring together early childhood stakeholders to identify gaps; share expertise and resources to break down silos; elevate regional and family voice; and implement strategies to respond to the needs of each and every child and family in their respective area. Regional Council members are crucial to each stage of this process, both in official convenings of the Regional Councils, and within the early childhood system more broadly.

The 12 Regional Councils are mandated to support an integrated system of early care, health, and education at the local level under Vermont Statute Title 33 § Chapter 46. In alignment with, and with support from, the State Advisory Council, Regional councils are tasked with coordinating and implementing services in accordance with system and regional priorities. Regular Regional Council meetings are just one way that this mandate is fulfilled.

Statewide, nearly 250 people bring their perspectives together through Regional Councils on a monthly basis. Early childhood stakeholders across regional tables include professionals in physical and mental health, social services, basic needs, early childhood education, PreK-12 education, families of children under 9, and community members invested in the well-being of young children.

Each Regional Council has an action plan to guide decisions and activities. While each plan supports a local comprehensive early childhood system, two regional priorities are set by Regional Councils annually to share across the state. The map below presents the top two priorities of each region which showcases the strength of the regional council network in local priority setting, as well as the connections and variation between the 12 regions in Vermont.



More information about each region including monthly council meetings and updates can be found at [buildingbrightfutures.org/what-we-do/regional-councils/](https://buildingbrightfutures.org/what-we-do/regional-councils/)